
Product Name: Glycophorin A Mouse Monoclonal Antibody**Catalog #: AMM22124**

For research use only.

Summary

Description	Mouse Monoclonal Antibody
Host	Mouse
Application	IHC,IF,ELISA
Reactivity	Human
Conjugation	Unconjugated
Modification	Unmodified
Isotype	IgG1,Kappa
Clonality	Monoclonal
Form	Liquid
Storage	Aliquot and store at -20°C (valid for 12 months). Avoid freeze/thaw cycles.
Shipping	Ice bags
Buffer	PBS, 50% glycerol, 0.05% Proclin 300, 0.05%BSA
Purification	The antibody was affinity-purified from ascites by affinity-chromatography using specific immunogen.

Application

Dilution Ratio	IHC 1:200-400;IF 1:50-200;ELISA 1:500-5000
Molecular Weight	Calculated MW:16kDa,Observed MW:37kDa

Antigen Information

Gene Name	GYPA GPA
Alternative Names	Glycophorin-A;MN sialoglycoprotein;PAS-2;Sialoglycoprotein alpha;CD antigen CD235a;
Gene ID	Human:2993
SwissProt ID	Human:P02724
Immunogen	Synthesized peptide derived from human Glycophorin A AA range: 1-100

Background

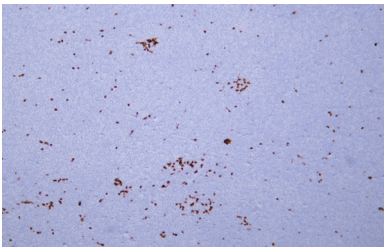
Glycophorins A (GYPA) and B (GYPB) are major sialoglycoproteins of the human erythrocyte membrane which bear the antigenic determinants for the MN and Ss blood groups. In addition to the M or N and S or s antigens that commonly occur in all populations, about 40 related variant phenotypes have been identified. These variants include all the variants of the

Miltenberger complex and several isoforms of Sta, as well as Dantu, Sat, He, Mg, and deletion variants Ena, S-s-U- and Mk. Most of the variants are the result of gene recombinations between GYPA and GYPB. [provided by RefSeq, Jul 2008],

Research Area

Pathology

Image Data



Human acute myeloid leukemia tissue was stained with Anti-Glycophorin A Antibody