
Product Name: Cytokeratin 20(CK20) Mouse Monoclonal Antibody**Catalog #: AMM22119**

For research use only.

Summary

Description	Mouse Monoclonal Antibody
Host	Mouse
Application	IHC,ELISA
Reactivity	Human,Mouse,Rat
Conjugation	Unconjugated
Modification	Unmodified
Isotype	IgG2b,Kappa
Clonality	Monoclonal
Form	Liquid
Storage	Aliquot and store at -20°C (valid for 12 months). Avoid freeze/thaw cycles.
Shipping	Ice bags
Buffer	PBS, 50% glycerol, 0.05% Proclin 300, 0.05%BSA
Purification	The antibody was affinity-purified from ascites by affinity-chromatography using specific immunogen.

Application

Dilution Ratio	IHC 1:200-400;ELISA 1:500-5000
Molecular Weight	Calculated MW:48kDa,Observed MW:48kDa

Antigen Information

Gene Name	KRT20
Alternative Names	Keratin, type I cytoskeletal 20;Cytokeratin-20;CK-20;Keratin-20;K20;Protein IT;
Gene ID	Human:54474
SwissProt ID	Human:P35900
Immunogen	Synthesized peptide derived from human CK20 AA range: 300-424

Background

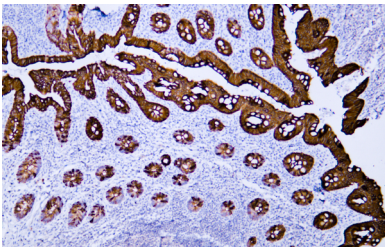
The protein encoded by this gene is a member of the keratin family. The keratins are intermediate filament proteins responsible for the structural integrity of epithelial cells and are subdivided into cytokeratins and hair keratins. The type I cytokeratins consist of acidic proteins which are arranged in pairs of heterotypic keratin chains. This cytokeratin is a major cellular protein of

mature enterocytes and goblet cells and is specifically expressed in the gastric and intestinal mucosa. The type I cytokeratin genes are clustered in a region of chromosome 17q12-q21. [provided by RefSeq, Jul 2008],

Research Area

Pathology

Image Data



Human appendix tissue was stained with Anti-Cytokeratin 20 Antibody