

---

**Product Name: Cytokeratin 16(CK16) Mouse Monoclonal Antibody****Catalog #: AMM22116**

For research use only.

**Summary**

<b>Description</b>	Mouse Monoclonal Antibody
<b>Host</b>	Mouse
<b>Application</b>	IHC,ELISA
<b>Reactivity</b>	Human
<b>Conjugation</b>	Unconjugated
<b>Modification</b>	Unmodified
<b>Isotype</b>	IgG2b,Kappa
<b>Clonality</b>	Monoclonal
<b>Form</b>	Liquid
<b>Storage</b>	Aliquot and store at -20°C (valid for 12 months). Avoid freeze/thaw cycles.
<b>Shipping</b>	Ice bags
<b>Buffer</b>	PBS, 50% glycerol, 0.05% Proclin 300, 0.05%BSA
<b>Purification</b>	The antibody was affinity-purified from ascites by affinity-chromatography using specific immunogen.

**Application**

<b>Dilution Ratio</b>	IHC 1:200-400;ELISA 1:500-5000
<b>Molecular Weight</b>	Calculated MW:51kDa,Observed MW:55kDa

**Antigen Information**

<b>Gene Name</b>	KRT16 KRT16A
<b>Alternative Names</b>	Keratin, type I cytoskeletal 16;Cytokeratin-16;CK-16;Keratin-16;K16;
<b>Gene ID</b>	Human:3868
<b>SwissProt ID</b>	Human:P08779
<b>Immunogen</b>	Synthesized peptide derived from human CK16 AA range: 400-473

**Background**

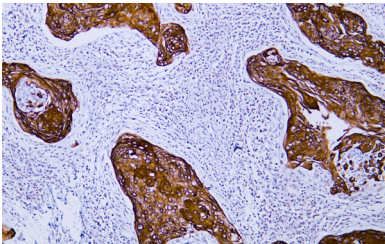
The protein encoded by this gene is a member of the keratin gene family. The keratins are intermediate filament proteins responsible for the structural integrity of epithelial cells and are subdivided into cytokeratins and hair keratins. Most of the type I cytokeratins consist of acidic proteins which are arranged in pairs of heterotypic keratin chains and are clustered in a region of

chromosome 17q12-q21. This keratin has been coexpressed with keratin 14 in a number of epithelial tissues, including esophagus, tongue, and hair follicles. Mutations in this gene are associated with type 1 pachyonychia congenita, non-epidermolytic palmoplantar keratoderma and unilateral palmoplantar verrucous nevus. [provided by RefSeq, Jul 2008],

## Research Area

Pathology

## Image Data



Human cervical squamous cell carcinoma tissue was stained with Anti-Cytokeratin 16 Antibody