
Product Name: Cytokeratin 15(CK15) Mouse Monoclonal Antibody**Catalog #: AMM22115**

For research use only.

Summary

| | |
|---------------------|------------------------------------------------------------------------------------------------------|
| Description | Mouse Monoclonal Antibody |
| Host | Mouse |
| Application | IHC,ELISA |
| Reactivity | Human |
| Conjugation | Unconjugated |
| Modification | Unmodified |
| Isotype | IgG1,Kappa |
| Clonality | Monoclonal |
| Form | Liquid |
| Storage | Aliquot and store at -20°C (valid for 12 months). Avoid freeze/thaw cycles. |
| Shipping | Ice bags |
| Buffer | PBS, 50% glycerol, 0.05% Proclin 300, 0.05%BSA |
| Purification | The antibody was affinity-purified from ascites by affinity-chromatography using specific immunogen. |

Application

| | |
|-------------------------|---------------------------------------|
| Dilution Ratio | IHC 1:200-400;ELISA 1:500-5000 |
| Molecular Weight | Calculated MW:49kDa,Observed MW:49kDa |

Antigen Information

| | |
|--------------------------|----------------------------------------------------------------------|
| Gene Name | KRT15 KRTB |
| Alternative Names | Keratin, type I cytoskeletal 15;Cytokeratin-15;CK-15;Keratin-15;K15; |
| Gene ID | Human:3866 |
| SwissProt ID | Human:P19012 |
| Immunogen | Synthesized peptide derived from human CK15 AA range: 350-456 |

Background

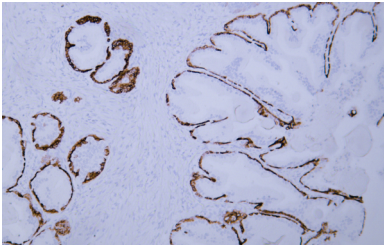
The protein encoded by this gene is a member of the keratin gene family. The keratins are intermediate filament proteins responsible for the structural integrity of epithelial cells and are subdivided into cytokeratins and hair keratins. Most of the type I cytokeratins consist of acidic proteins which are arranged in pairs of heterotypic keratin chains and are clustered in a region on

chromosome 17q21.2. [provided by RefSeq, Jul 2008],

Research Area

Pathology

Image Data



Human prostate tissue was stained with Anti-Cytokeratin 15 Antibody