
Product Name: Cytokeratin 10(CK10) Mouse Monoclonal Antibody**Catalog #: AMM22114**

For research use only.

Summary

Description	Mouse Monoclonal Antibody
Host	Mouse
Application	IHC,IF,ELISA
Reactivity	Human
Conjugation	Unconjugated
Modification	Unmodified
Isotype	IgG1,Kappa
Clonality	Monoclonal
Form	Liquid
Storage	Aliquot and store at -20°C (valid for 12 months). Avoid freeze/thaw cycles.
Shipping	Ice bags
Buffer	PBS, 50% glycerol, 0.05% Proclin 300, 0.05%BSA
Purification	The antibody was affinity-purified from ascites by affinity-chromatography using specific immunogen.

Application

Dilution Ratio	IHC 1:200-400;IF 1:50-200;ELISA 1:500-5000
Molecular Weight	Calculated MW:60kDa,Observed MW:70kDa

Antigen Information

Gene Name	KRT10 KPP
Alternative Names	Keratin, type I cytoskeletal 10;Cytokeratin-10;CK-10;Keratin-10;K10;
Gene ID	Human:3858
SwissProt ID	Human:P13645
Immunogen	Synthesized peptide derived from human CK10 AA range: 500-584

Background

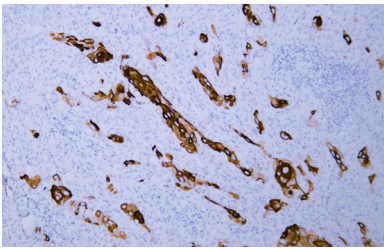
This gene encodes a member of the type I (acidic) cytokeratin family, which belongs to the superfamily of intermediate filament (IF) proteins. Keratins are heteropolymeric structural proteins which form the intermediate filament. These filaments, along with actin microfilaments and microtubules, compose the cytoskeleton of epithelial cells. Mutations in this gene are associated with

epidermolytic hyperkeratosis. This gene is located within a cluster of keratin family members on chromosome 17q21. [provided by RefSeq, Jul 2008],

Research Area

Pathology

Image Data



Human cervix tissue was stained with Anti-Cytokeratin 10 Antibody