
Product Name: Collagen Type II Mouse Monoclonal Antibody**Catalog #: AMM22113**

For research use only.

Summary

Description	Mouse Monoclonal Antibody
Host	Mouse
Application	IHC,IF,ELISA
Reactivity	Human
Conjugation	Unconjugated
Modification	Unmodified
Isotype	IgG2b,Kappa
Clonality	Monoclonal
Form	Liquid
Storage	Aliquot and store at -20°C (valid for 12 months). Avoid freeze/thaw cycles.
Shipping	Ice bags
Buffer	PBS, 50% glycerol, 0.05% Proclin 300, 0.05%BSA
Purification	The antibody was affinity-purified from ascites by affinity-chromatography using specific immunogen.

Application

Dilution Ratio	IHC 1:50-200;IF 1:50-200;ELISA 1:500-5000
Molecular Weight	Calculated MW:141kDa

Antigen Information

Gene Name	COL2A1
Alternative Names	Collagen alpha-1;II;chain;Alpha-1 type II collagen;[Cleaved into: Collagen alpha-1;II;chain;Chondrocalcin]
Gene ID	Human:1280
SwissProt ID	Human:P02458
Immunogen	Synthesized peptide derived from human Collagen Type II AA range: 1200-1300

Background

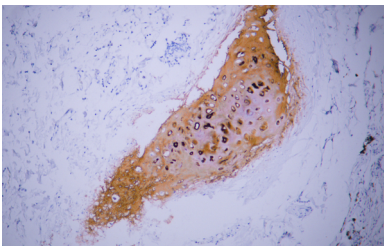
This gene encodes the alpha-1 chain of type II collagen, a fibrillar collagen found in cartilage and the vitreous humor of the eye. Mutations in this gene are associated with achondrogenesis, chondrodysplasia, early onset familial osteoarthritis, SED

congenita, Langer-Saldino achondrogenesis, Kniest dysplasia, Stickler syndrome type I, and spondyloepimetaphyseal dysplasia Strudwick type. In addition, defects in processing chondrocalcin, a calcium binding protein that is the C-propeptide of this collagen molecule, are also associated with chondrodysplasia. There are two transcripts identified for this gene. [provided by RefSeq, Jul 2008],

Research Area

Pathology

Image Data



Human cartilage tissue was stained with Anti-Collagen Type II Antibody