

---

**Product Name: Claudin 7 Mouse Monoclonal Antibody****Catalog #: AMM22112**

For research use only.

**Summary**

<b>Description</b>	Mouse Monoclonal Antibody
<b>Host</b>	Mouse
<b>Application</b>	IHC,ELISA
<b>Reactivity</b>	Human,Mouse,Rat
<b>Conjugation</b>	Unconjugated
<b>Modification</b>	Unmodified
<b>Isotype</b>	IgG2b,Kappa
<b>Clonality</b>	Monoclonal
<b>Form</b>	Liquid
<b>Storage</b>	Aliquot and store at -20°C (valid for 12 months). Avoid freeze/thaw cycles.
<b>Shipping</b>	Ice bags
<b>Buffer</b>	PBS, 50% glycerol, 0.05% Proclin 300, 0.05%BSA
<b>Purification</b>	The antibody was affinity-purified from ascites by affinity-chromatography using specific immunogen.

**Application**

<b>Dilution Ratio</b>	IHC 1:200-400;ELISA 1:500-5000
<b>Molecular Weight</b>	Calculated MW:22kDa,Observed MW:22kDa

**Antigen Information**

<b>Gene Name</b>	CLDN7 CEPTRL2 CPETRL2 CEPTR L2;CEPTRL 2;CEPTRL2;Claudin 1;Claudin 7;Claudin 9;Claudin-
<b>Alternative Names</b>	7;Claudin1;Claudin7;Claudin9;CLD7_HUMAN;CLDN 7;CLDN-7;CLDN7;Clostridium perfringens enterotoxin receptor like 2;CPETR L2;CPETRL 2;CPETRL2;Hs.84359
<b>Gene ID</b>	Human:1366
<b>SwissProt ID</b>	Human:O95471,Mouse:Q9Z261,Rat:Q9Z1L1
<b>Immunogen</b>	Synthesized peptide derived from human Claudin 7 AA range: 100-211

**Background**

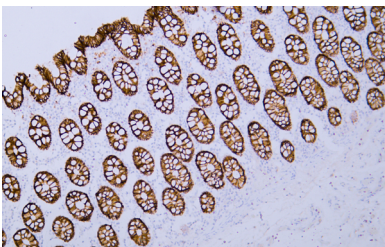
This gene encodes a member of the claudin family. Claudins are integral membrane proteins and components of tight junction

strands. Tight junction strands serve as a physical barrier to prevent solutes and water from passing freely through the paracellular space between epithelial or endothelial cell sheets, and also play critical roles in maintaining cell polarity and signal transductions. Differential expression of this gene has been observed in different types of malignancies, including breast cancer, ovarian cancer, hepatocellular carcinomas, urinary tumors, prostate cancer, lung cancer, head and neck cancers, thyroid carcinomas, etc.. Alternatively spliced transcript variants encoding different isoforms have been found.[provided by RefSeq, May 2010],

## Research Area

Pathology

## Image Data



Human colon tissue was stained with Anti-Claudin 7 Antibody