
Product Name: CD3 Mouse Monoclonal Antibody**Catalog #: AMM22106**

For research use only.

Summary

Description	Mouse Monoclonal Antibody
Host	Mouse
Application	IHC,ELISA
Reactivity	Human
Conjugation	Unconjugated
Modification	Unmodified
Isotype	IgG2a,Kappa
Clonality	Monoclonal
Form	Liquid
Storage	Aliquot and store at -20°C (valid for 12 months). Avoid freeze/thaw cycles.
Shipping	Ice bags
Buffer	PBS, 50% glycerol, 0.05% Proclin 300, 0.05%BSA
Purification	The antibody was affinity-purified from ascites by affinity-chromatography using specific immunogen.

Application

Dilution Ratio	IHC 1:50-200;ELISA 1:500-5000
Molecular Weight	Calculated MW:23kDa,Observed MW:23kDa

Antigen Information

Gene Name	CD3E T3E
Alternative Names	T-cell surface glycoprotein CD3 epsilon chain;T-cell surface antigen T3/Leu-4 epsilon chain;CD antigen CD3e;
Gene ID	Human:916
SwissProt ID	Human:P07766
Immunogen	Synthesized peptide derived from human CD3, CD3E AA range: 1-100

Background

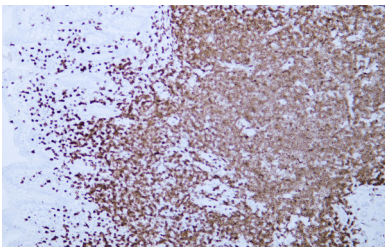
The protein encoded by this gene is the CD3-epsilon polypeptide, which together with CD3-gamma, -delta and -zeta, and the T-cell receptor alpha/beta and gamma/delta heterodimers, forms the T-cell receptor-CD3 complex. This complex plays an

important role in coupling antigen recognition to several intracellular signal-transduction pathways. The genes encoding the epsilon, gamma and delta polypeptides are located in the same cluster on chromosome 11. The epsilon polypeptide plays an essential role in T-cell development. Defects in this gene cause immunodeficiency. This gene has also been linked to a susceptibility to type I diabetes in women. [provided by RefSeq, Jul 2008],

Research Area

Pathology

Image Data



Human appendix tissue was stained with Anti-CD3 Antibody