

---

**Product Name: Cytokeratin pan(CK-pan) Mouse Monoclonal Antibody****Catalog #: AMM22096**

For research use only.

**Summary**

<b>Description</b>	Mouse Monoclonal Antibody
<b>Host</b>	Mouse
<b>Application</b>	IHC,ELISA
<b>Reactivity</b>	Human,Mouse,Rat
<b>Conjugation</b>	Unconjugated
<b>Modification</b>	Unmodified
<b>Isotype</b>	IgG1,Kappa
<b>Clonality</b>	Monoclonal
<b>Form</b>	Liquid
<b>Storage</b>	Aliquot and store at -20°C (valid for 12 months). Avoid freeze/thaw cycles.
<b>Shipping</b>	Ice bags
<b>Buffer</b>	PBS, 50% glycerol, 0.05% Proclin 300, 0.05%BSA
<b>Purification</b>	The antibody was affinity-purified from ascites by affinity-chromatography using specific immunogen.

**Application**

<b>Dilution Ratio</b>	IHC 1:200-400;ELISA 1:500-5000
<b>Molecular Weight</b>	Observed MW:52kDa,55kDa

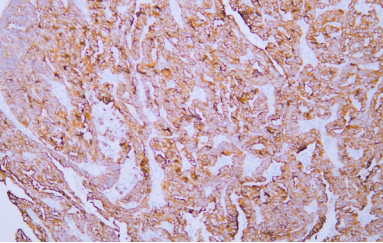
**Antigen Information**

<b>Gene Name</b>	CK pan; CK-pan
<b>Alternative Names</b>	
<b>Gene ID</b>	
<b>SwissProt ID</b>	Human:P13645;P13646;P02533;P19012;P08779;P08727
<b>Immunogen</b>	Synthesized peptide derived from human Cytokeratin Pan AA range: 100-200

**Background****Research Area**

Pathology

### Image Data



Human endometrial adenocarcinoma tissue was stained with Anti-Cytokeratin Antibody