
Product Name: Galectin 3(GAL3) Mouse Monoclonal Antibody**Catalog #: AMM22089**

For research use only.

Summary

Description	Mouse Monoclonal Antibody
Host	Mouse
Application	IHC,ELISA
Reactivity	Human
Conjugation	Unconjugated
Modification	Unmodified
Isotype	IgG2b,Kappa
Clonality	Monoclonal
Form	Liquid
Storage	Aliquot and store at -20°C (valid for 12 months). Avoid freeze/thaw cycles.
Shipping	Ice bags
Buffer	PBS, 50% glycerol, 0.05% Proclin 300, 0.05%BSA
Purification	The antibody was affinity-purified from ascites by affinity-chromatography using specific immunogen.

Application

Dilution Ratio	IHC 1:50-100;ELISA 1:500-5000
Molecular Weight	Calculated MW:26kDa,Observed MW:33kDa

Antigen Information

Gene Name	LGALS3 MAC2 Galectin-3;Gal-3;35 kDa lectin;Carbohydrate-binding protein 35;CBP 35;Galactose-specific
Alternative Names	lectin 3;Galactoside-binding protein;GALBP;IgE-binding protein;L-31;Laminin-binding protein;Lectin L-29;Mac-2 antigen;
Gene ID	Human:3958
SwissProt ID	Human:P17931
Immunogen	Synthesized peptide derived from human Galectin 3 AA range: 150-250

Background

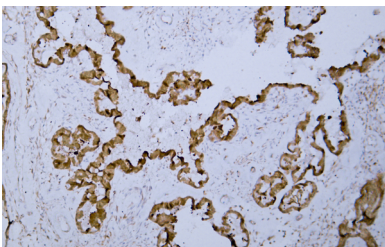
This gene encodes a member of the galectin family of carbohydrate binding proteins. Members of this protein family have an

affinity for beta-galactosides. The encoded protein is characterized by an N-terminal proline-rich tandem repeat domain and a single C-terminal carbohydrate recognition domain. This protein can self-associate through the N-terminal domain allowing it to bind to multivalent saccharide ligands. This protein localizes to the extracellular matrix, the cytoplasm and the nucleus. This protein plays a role in numerous cellular functions including apoptosis, innate immunity, cell adhesion and T-cell regulation. The protein exhibits antimicrobial activity against bacteria and fungi. Alternate splicing results in multiple transcript variants. [provided by RefSeq, Oct 2014],

Research Area

Pathology

Image Data



Human Ovarian carcinoma tissue was stained with Anti-Galectin-3 Antibody