

---

**Product Name: Glycophorin A(GYPA) Mouse Monoclonal Antibody****Catalog #: AMM22087**

For research use only.

**Summary**

<b>Description</b>	Mouse Monoclonal Antibody
<b>Host</b>	Mouse
<b>Application</b>	IHC,ELISA
<b>Reactivity</b>	Human
<b>Conjugation</b>	Unconjugated
<b>Modification</b>	Unmodified
<b>Isotype</b>	IgG1,Kappa
<b>Clonality</b>	Monoclonal
<b>Form</b>	Liquid
<b>Storage</b>	Aliquot and store at -20°C (valid for 12 months). Avoid freeze/thaw cycles.
<b>Shipping</b>	Ice bags
<b>Buffer</b>	PBS, 50% glycerol, 0.05% Proclin 300, 0.05%BSA
<b>Purification</b>	The antibody was affinity-purified from ascites by affinity-chromatography using specific immunogen.

**Application**

<b>Dilution Ratio</b>	IHC 1:200-400;ELISA 1:500-5000
<b>Molecular Weight</b>	Calculated MW:16kDa,Observed MW:37kDa

**Antigen Information**

<b>Gene Name</b>	GYPA GPA
<b>Alternative Names</b>	Glycophorin-A;MN sialoglycoprotein;PAS-2;Sialoglycoprotein alpha;CD antigen CD235a;
<b>Gene ID</b>	Human:2993
<b>SwissProt ID</b>	Human:P02724
<b>Immunogen</b>	Synthesized peptide derived from human Glycophorin A, CD235a AA range: 1-100

**Background**

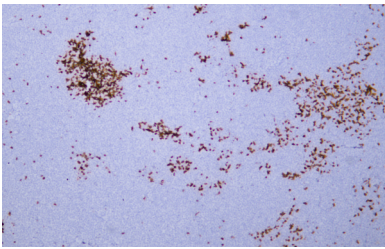
Glycophorins A (GYPA) and B (GYPB) are major sialoglycoproteins of the human erythrocyte membrane which bear the antigenic determinants for the MN and Ss blood groups. In addition to the M or N and S or s antigens that commonly occur in all populations, about 40 related variant phenotypes have been identified. These variants include all the variants of the

Miltenberger complex and several isoforms of Sta, as well as Dantu, Sat, He, Mg, and deletion variants Ena, S-s-U- and Mk. Most of the variants are the result of gene recombinations between GYPA and GYPB. [provided by RefSeq, Jul 2008],

## Research Area

Pathology

## Image Data



Human acute myeloid leukemia tissue was stained with Anti-Glycophorin A Antibody