
Product Name: NSE Mouse Monoclonal Antibody**Catalog #: AMM22085**

For research use only.

Summary

Description	Mouse Monoclonal Antibody
Host	Mouse
Application	IHC,ELISA
Reactivity	Human,Mouse,Rat
Conjugation	Unconjugated
Modification	Unmodified
Isotype	IgG2a,Kappa
Clonality	Monoclonal
Form	Liquid
Storage	Aliquot and store at -20°C (valid for 12 months). Avoid freeze/thaw cycles.
Shipping	Ice bags
Buffer	PBS, 50% glycerol, 0.05% Proclin 300, 0.05%BSA
Purification	The antibody was affinity-purified from ascites by affinity-chromatography using specific immunogen.

Application

Dilution Ratio	IHC 1:200-400;ELISA 1:500-5000
Molecular Weight	Calculated MW:47kDa,Observed MW:47kDa

Antigen Information

Gene Name	ENO2
Alternative Names	Gamma-enolase;2-phospho-D-glycerate hydro-lyase;Enolase 2;Neural enolase;Neuron-specific enolase;NSE;
Gene ID	Human:2026
SwissProt ID	Human:P09104
Immunogen	Synthesized peptide derived from human Neuron-Specific Enolase(NSE) AA range: 300-434

Background

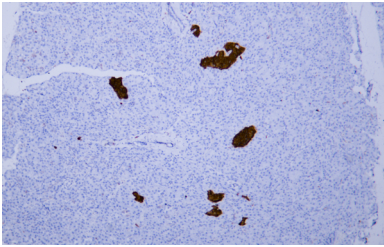
enolase 2(ENO2) Homo sapiens This gene encodes one of the three enolase isoenzymes found in mammals. This isoenzyme, a homodimer, is found in mature neurons and cells of neuronal origin. A switch from alpha enolase to gamma enolase occurs in

neural tissue during development in rats and primates. [provided by RefSeq, Jul 2008],

Research Area

Pathology

Image Data



Human pancreas tissue was stained with Anti-Neuron-Specific Enolase Antibody