

---

**Product Name: Napsin A Mouse Monoclonal Antibody****Catalog #: AMM22082**

For research use only.

**Summary**

<b>Description</b>	Mouse Monoclonal Antibody
<b>Host</b>	Mouse
<b>Application</b>	IHC,IF,ELISA
<b>Reactivity</b>	Human
<b>Conjugation</b>	Unconjugated
<b>Modification</b>	Unmodified
<b>Isotype</b>	IgG1,Kappa
<b>Clonality</b>	Monoclonal
<b>Form</b>	Liquid
<b>Storage</b>	Aliquot and store at -20°C (valid for 12 months). Avoid freeze/thaw cycles.
<b>Shipping</b>	Ice bags
<b>Buffer</b>	PBS, 50% glycerol, 0.05% Proclin 300, 0.05%BSA
<b>Purification</b>	The antibody was affinity-purified from ascites by affinity-chromatography using specific immunogen.

**Application**

<b>Dilution Ratio</b>	IHC 1:200-400;IF 1:50-200;ELISA 1:500-5000
<b>Molecular Weight</b>	Calculated MW:45kDa

**Antigen Information**

<b>Gene Name</b>	NAPSA NAP1 NAPA
<b>Alternative Names</b>	Napsin-A;Aspartyl protease 4;ASP4;Asp 4;Napsin-1;TA01/TA02;
<b>Gene ID</b>	Human:9476
<b>SwissProt ID</b>	Human:O96009
<b>Immunogen</b>	Synthesized peptide derived from human Napsin A AA range: 100-200

**Background**

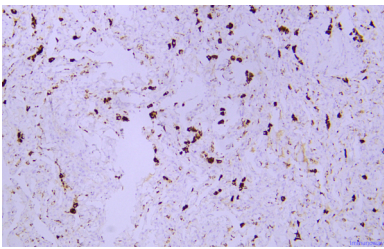
This gene encodes a member of the peptidase A1 family of aspartic proteases. The encoded preproprotein is proteolytically processed to generate an activation peptide and the mature protease. The activation peptides of aspartic proteinases function as inhibitors of the protease active site. These peptide segments, or pro-parts, are deemed important for correct folding,

targeting, and control of the activation of aspartic proteinase zymogens. The encoded protease may play a role in the proteolytic processing of pulmonary surfactant protein B in the lung and may function in protein catabolism in the renal proximal tubules. This gene has been described as a marker for lung adenocarcinoma and renal cell carcinoma. [provided by RefSeq, Feb 2016],

## Research Area

Pathology

## Image Data



Immunohistochemical analysis of paraffin-embedded human lung Antibody was diluted at 1:200(4° overnight).