
Product Name: Napsin A Mouse Monoclonal Antibody**Catalog #: AMM22080**

For research use only.

Summary

Description	Mouse Monoclonal Antibody
Host	Mouse
Application	IHC,IF,ELISA
Reactivity	Human,Mouse,
Conjugation	Unconjugated
Modification	Unmodified
Isotype	IgG1,Kappa
Clonality	Monoclonal
Form	Liquid
Storage	Aliquot and store at -20°C (valid for 12 months). Avoid freeze/thaw cycles.
Shipping	Ice bags
Buffer	PBS, 50% glycerol, 0.05% Proclin 300, 0.05%BSA
Purification	The antibody was affinity-purified from ascites by affinity-chromatography using specific immunogen.

Application

Dilution Ratio	IHC 1:200-400;IF 1:50-200;ELISA 1:500-5000
Molecular Weight	Calculated MW:45kDa

Antigen Information

Gene Name	NAPSA NAP1 NAPA
Alternative Names	Napsin-A;Aspartyl protease 4;ASP4;Asp 4;Napsin-1;TA01/TA02;
Gene ID	Human:9476
SwissProt ID	Human:O96009
Immunogen	Synthesized peptide derived from human Napsin A AA range: 100-200

Background

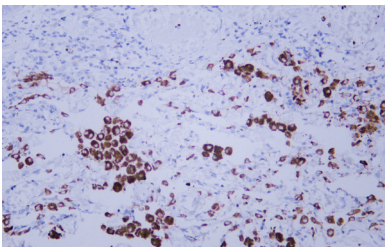
This gene encodes a member of the peptidase A1 family of aspartic proteases. The encoded preproprotein is proteolytically processed to generate an activation peptide and the mature protease. The activation peptides of aspartic proteinases function as inhibitors of the protease active site. These peptide segments, or pro-parts, are deemed important for correct folding,

targeting, and control of the activation of aspartic proteinase zymogens. The encoded protease may play a role in the proteolytic processing of pulmonary surfactant protein B in the lung and may function in protein catabolism in the renal proximal tubules. This gene has been described as a marker for lung adenocarcinoma and renal cell carcinoma. [provided by RefSeq, Feb 2016],

Research Area

Pathology

Image Data



Human lung adenocarcinoma tissue was stained with Anti-Napsin A Antibody