
Product Name: GCDFP-15 Mouse Monoclonal Antibody**Catalog #: AMM22070**

For research use only.

Summary

Description	Mouse Monoclonal Antibody
Host	Mouse
Application	IHC,IF,ELISA
Reactivity	Human
Conjugation	Unconjugated
Modification	Unmodified
Isotype	IgG1,Kappa
Clonality	Monoclonal
Form	Liquid
Storage	Aliquot and store at -20°C (valid for 12 months). Avoid freeze/thaw cycles.
Shipping	Ice bags
Buffer	PBS, 50% glycerol, 0.05% Proclin 300, 0.05%BSA
Purification	The antibody was affinity-purified from ascites by affinity-chromatography using specific immunogen.

Application

Dilution Ratio	IHC 1:200-400;IF 1:50-200;ELISA 1:500-5000
Molecular Weight	Calculated MW:17kDa

Antigen Information

Gene Name	PIP GCDFP15 GPIP4
Alternative Names	
Gene ID	Human:5304
SwissProt ID	Human:P12273
Immunogen	Synthesized peptide derived from human Gross cystic disease fluid protein-15 (GCDFP-15) AA range: 50-146

Background

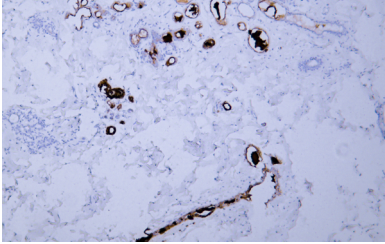
induction:By prolactin and androgen; inhibited by estrogen.,similarity:Belongs to the PIP family.,subunit:Monomer. Interacts with AZGP1.,tissue specificity:Expressed in pathological conditions of the mammary gland and in several exocrine tissues, such

as the lacrimal, salivary, and sweat glands,

Research Area

Pathology

Image Data



Human breast tissue was stained with Anti-GCDFP-15 Antibody