
Product Name: TIMP1 Mouse Monoclonal Antibody**Catalog #: AMM22068**

For research use only.

Summary

Description	Mouse Monoclonal Antibody
Host	Mouse
Application	IHC,IF,ELISA
Reactivity	Human
Conjugation	Unconjugated
Modification	Unmodified
Isotype	IgG1,Kappa
Clonality	Monoclonal
Form	Liquid
Storage	Aliquot and store at -20°C (valid for 12 months). Avoid freeze/thaw cycles.
Shipping	Ice bags
Buffer	PBS, 50% glycerol, 0.05% Proclin 300, 0.05%BSA
Purification	The antibody was affinity-purified from ascites by affinity-chromatography using specific immunogen.

Application

Dilution Ratio	IHC 1:50-200;IF 1:50-200;ELISA 1:500-5000
Molecular Weight	Calculated MW:23kDa,Observed MW:23kDa

Antigen Information

Gene Name	TIMP1 CLGI TIMP
Alternative Names	
Gene ID	Human:7076
SwissProt ID	Human:P01033
Immunogen	Synthesized peptide derived from human Tissue Inhibitor of Metalloproteinases 1(TIMP1) AA range: 50-150

Background

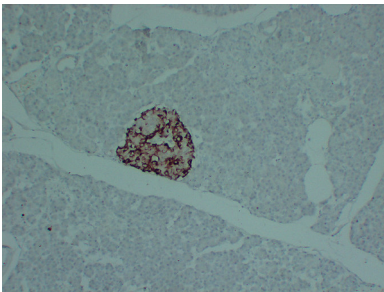
This gene belongs to the TIMP gene family. The proteins encoded by this gene family are natural inhibitors of the matrix metalloproteinases (MMPs), a group of peptidases involved in degradation of the extracellular matrix. In addition to its

inhibitory role against most of the known MMPs, the encoded protein is able to promote cell proliferation in a wide range of cell types, and may also have an anti-apoptotic function. Transcription of this gene is highly inducible in response to many cytokines and hormones. In addition, the expression from some but not all inactive X chromosomes suggests that this gene inactivation is polymorphic in human females. This gene is located within intron 6 of the synapsin I gene and is transcribed in the opposite direction. [provided by RefSeq, Jul 2008],

Research Area

Pathology

Image Data



Immunohistochemical analysis of paraffin-embedded human Pancreas. 1, Tissue Inhibitor of Metalloproteinases 1 (TIMP1) Antibody was diluted at 1:200 (4°C, overnight). 2, EDTA pH 8.0 was used for antigen retrieval