

---

**Product Name: GLUT-1 Mouse Monoclonal Antibody****Catalog #: AMM22063**

For research use only.

**Summary**

<b>Description</b>	Mouse Monoclonal Antibody
<b>Host</b>	Mouse
<b>Application</b>	IHC,IF,ELISA
<b>Reactivity</b>	Human,Mouse,Rat
<b>Conjugation</b>	Unconjugated
<b>Modification</b>	Unmodified
<b>Isotype</b>	IgG2a,Kappa
<b>Clonality</b>	Monoclonal
<b>Form</b>	Liquid
<b>Storage</b>	Aliquot and store at -20°C (valid for 12 months). Avoid freeze/thaw cycles.
<b>Shipping</b>	Ice bags
<b>Buffer</b>	PBS, 50% glycerol, 0.05% Proclin 300, 0.05%BSA
<b>Purification</b>	The antibody was affinity-purified from ascites by affinity-chromatography using specific immunogen.

**Application**

<b>Dilution Ratio</b>	IHC 1:200-400;IF 1:50-200;ELISA 1:500-5000
<b>Molecular Weight</b>	Calculated MW:54kDa,Observed MW:54kDa

**Antigen Information**

<b>Gene Name</b>	SLC2A1 GLUT1
<b>Alternative Names</b>	
<b>Gene ID</b>	Human:6513
<b>SwissProt ID</b>	Human:P11166
<b>Immunogen</b>	Synthesized peptide derived from human GLUT-1 AA range: 400-492

**Background**

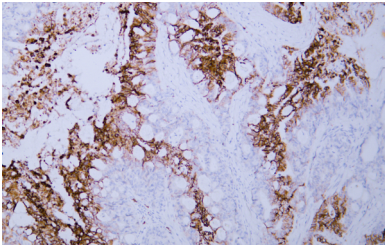
This gene encodes a major glucose transporter in the mammalian blood-brain barrier. The encoded protein is found primarily in the cell membrane and on the cell surface, where it can also function as a receptor for human T-cell leukemia virus (HTLV) I and II. Mutations in this gene have been found in a family with paroxysmal exertion-induced dyskinesia. [provided by RefSeq,

Apr 2013],

## Research Area

Pathology

## Image Data



Human colon carcinoma tissue was stained with Anti-GLUT-1 Antibody