
Product Name: CD105 Mouse Monoclonal Antibody**Catalog #: AMM22058**

For research use only.

Summary

Description	Mouse Monoclonal Antibody
Host	Mouse
Application	IHC,ELISA
Reactivity	Human
Conjugation	Unconjugated
Modification	Unmodified
Isotype	IgG2a,Kappa
Clonality	Monoclonal
Form	Liquid
Storage	Aliquot and store at -20°C (valid for 12 months). Avoid freeze/thaw cycles.
Shipping	Ice bags
Buffer	PBS, 50% glycerol, 0.05% Proclin 300, 0.05%BSA
Purification	The antibody was affinity-purified from ascites by affinity-chromatography using specific immunogen.

Application

Dilution Ratio	IHC 1:50-200;ELISA 1:500-5000
Molecular Weight	Calculated MW:70kDa,Observed MW:75kDa

Antigen Information

Gene Name	ENG END
Alternative Names	
Gene ID	Human:2022
SwissProt ID	Human:P17813
Immunogen	Synthesized peptide derived from human CD105(Endoglin) AA range: 400-500

Background

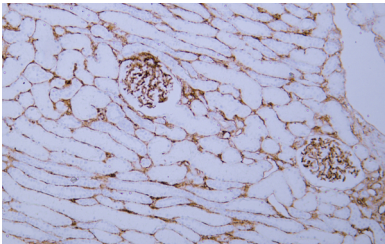
This gene encodes a homodimeric transmembrane protein which is a major glycoprotein of the vascular endothelium. This protein is a component of the transforming growth factor beta receptor complex and it binds to the beta1 and beta3 peptides with high affinity. Mutations in this gene cause hereditary hemorrhagic telangiectasia, also known as Osler-Rendu-Weber

syndrome 1, an autosomal dominant multisystemic vascular dysplasia. This gene may also be involved in preeclampsia and several types of cancer. Alternatively spliced transcript variants encoding different isoforms have been found for this gene. [provided by RefSeq, May 2013],

Research Area

Pathology

Image Data



Human kidney tissue was stained with anti-CD105 antibody.