
Product Name: IGF-2 Mouse Monoclonal Antibody**Catalog #: AMM22053**

For research use only.

Summary

Description	Mouse Monoclonal Antibody
Host	Mouse
Application	IHC,IF,ELISA
Reactivity	Human
Conjugation	Unconjugated
Modification	Unmodified
Isotype	IgG2b,Kappa
Clonality	Monoclonal
Form	Liquid
Storage	Aliquot and store at -20°C (valid for 12 months). Avoid freeze/thaw cycles.
Shipping	Ice bags
Buffer	PBS, 50% glycerol, 0.05% Proclin 300, 0.05%BSA
Purification	The antibody was affinity-purified from ascites by affinity-chromatography using specific immunogen.

Application

Dilution Ratio	IHC 1:50-200;IF 1:50-200;ELISA 1:500-5000
Molecular Weight	Calculated MW:20kDa

Antigen Information

Gene Name	IGF2 PP1446
Alternative Names	
Gene ID	Human:3481
SwissProt ID	Human:P01344
Immunogen	Synthesized peptide derived from human IGF-2 AA range: 1-100

Background

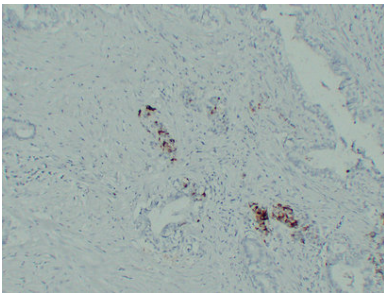
This gene encodes a member of the insulin family of polypeptide growth factors, which are involved in development and growth. It is an imprinted gene, expressed only from the paternal allele, and epigenetic changes at this locus are associated with Wilms tumour, Beckwith-Wiedemann syndrome, rhabdomyosarcoma, and Silver-Russell syndrome. A read-through INS-IGF2

gene exists, whose 5' region overlaps the INS gene and the 3' region overlaps this gene. Alternatively spliced transcript variants encoding different isoforms have been found for this gene. [provided by RefSeq, Oct 2010],

Research Area

Pathology

Image Data



Immunohistochemical analysis of paraffin-embedded Pancreatic carcinoma. 1, Antibody was diluted at 1:200(4°,overnight). 2, Heat-induced epitope retrieval (HIER) was used for antigen retrieval. 3,Secondary antibody was diluted at 1:200 (room temperature, 30min).