
Product Name: Parathyroid Hormone(PTH) Mouse Monoclonal Antibody**Catalog #: AMM22050**

For research use only.

Summary

Description	Mouse Monoclonal Antibody
Host	Mouse
Application	IHC,IF,ELISA
Reactivity	Human
Conjugation	Unconjugated
Modification	Unmodified
Isotype	IgG1,Kappa
Clonality	Monoclonal
Form	Liquid
Storage	Aliquot and store at -20°C (valid for 12 months). Avoid freeze/thaw cycles.
Shipping	Ice bags
Buffer	PBS, 50% glycerol, 0.05% Proclin 300, 0.05%BSA
Purification	The antibody was affinity-purified from ascites by affinity-chromatography using specific immunogen.

Application

Dilution Ratio	IHC 1:200-400;IF 1:50-200;ELISA 1:500-5000
Molecular Weight	Calculated MW:13kDa

Antigen Information

Gene Name	PTH
Alternative Names	
Gene ID	Human:5741
SwissProt ID	Human:P01270
Immunogen	Synthesized peptide derived from human Parathyroid Hormone (PTH) AA range: 50-115

Background

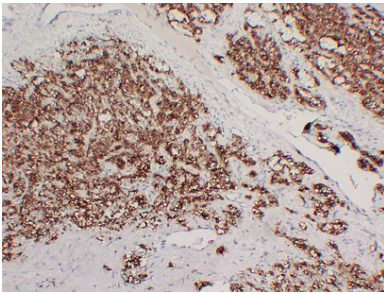
This gene encodes a member of the parathyroid family of proteins. The encoded preproprotein is proteolytically processed to generate a protein that binds to the parathyroid hormone/parathyroid hormone-related peptide receptor and regulates blood calcium and phosphate levels. Excess production of the encoded protein, known as hyperparathyroidism, can result in

hypercalcemia and kidney stones. On the other hand, defective processing of the encoded protein may lead to hypoparathyroidism, which can result in hypocalcemia and numbness. Alternative splicing results in multiple transcript variants. [provided by RefSeq, Oct 2015],

Research Area

Pathology

Image Data



Immunohistochemical analysis of paraffin-embedded Parathyroidoma. 1, Antibody was diluted at 1:200(4°,overnight). 2, Heat-induced epitope retrieval (HIER) was used for antigen retrieval. 3,Secondary antibody was diluted at 1:200 (room temperature, 30min).