

---

**Product Name: Somatostatin Mouse Monoclonal Antibody****Catalog #: AMM22044**

For research use only.

**Summary**

<b>Description</b>	Mouse Monoclonal Antibody
<b>Host</b>	Mouse
<b>Application</b>	IHC,IF,ELISA
<b>Reactivity</b>	Human,Mouse,Rat
<b>Conjugation</b>	Unconjugated
<b>Modification</b>	Unmodified
<b>Isotype</b>	IgG2b,Kappa
<b>Clonality</b>	Monoclonal
<b>Form</b>	Liquid
<b>Storage</b>	Aliquot and store at -20°C (valid for 12 months). Avoid freeze/thaw cycles.
<b>Shipping</b>	Ice bags
<b>Buffer</b>	PBS, 50% glycerol, 0.05% Proclin 300, 0.05%BSA
<b>Purification</b>	The antibody was affinity-purified from ascites by affinity-chromatography using specific immunogen.

**Application**

<b>Dilution Ratio</b>	IHC 1:200-400;IF 1:50-200;ELISA 1:500-5000
<b>Molecular Weight</b>	Calculated MW:12kDa

**Antigen Information**

<b>Gene Name</b>	SST
<b>Alternative Names</b>	Growth hormone release inhibiting factor;Growth hormone release-inhibiting factor;Prepro somatostatin;SMS_HUMAN;SMST;Somatostatin 14;Somatostatin 28;Somatostatin-14;SST
<b>Gene ID</b>	Human:6750
<b>SwissProt ID</b>	Human:P61278,Mouse:P60041,Rat:P60042
<b>Immunogen</b>	Synthesized peptide derived from human Somatostatin AA range: 50-116

**Background**

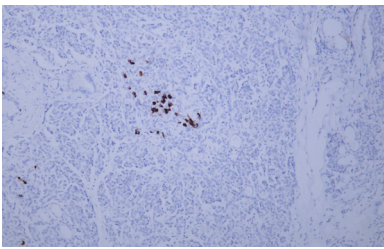
The hormone somatostatin has active 14 aa and 28 aa forms that are produced by alternate cleavage of the single preproprotein encoded by this gene. Somatostatin is expressed throughout the body and inhibits the release of numerous

secondary hormones by binding to high-affinity G-protein-coupled somatostatin receptors. This hormone is an important regulator of the endocrine system through its interactions with pituitary growth hormone, thyroid stimulating hormone, and most hormones of the gastrointestinal tract. Somatostatin also affects rates of neurotransmission in the central nervous system and proliferation of both normal and tumorigenic cells. [provided by RefSeq, Jul 2008],

## Research Area

Pathology

## Image Data



Human pancreas tissue was stained with Anti-Somatostatin Antibody