

---

**Product Name: S100A1 Mouse Monoclonal Antibody****Catalog #: AMM22041**

For research use only.

**Summary**

<b>Description</b>	Mouse Monoclonal Antibody
<b>Host</b>	Mouse
<b>Application</b>	IHC,ELISA
<b>Reactivity</b>	Human,Mouse,Rat
<b>Conjugation</b>	Unconjugated
<b>Modification</b>	Unmodified
<b>Isotype</b>	IgG1,Kappa
<b>Clonality</b>	Monoclonal
<b>Form</b>	Liquid
<b>Storage</b>	Aliquot and store at -20°C (valid for 12 months). Avoid freeze/thaw cycles.
<b>Shipping</b>	Ice bags
<b>Buffer</b>	PBS, 50% glycerol, 0.05% Proclin 300, 0.05%BSA
<b>Purification</b>	The antibody was affinity-purified from ascites by affinity-chromatography using specific immunogen.

**Application**

<b>Dilution Ratio</b>	IHC 1:200-400;ELISA 1:500-5000
<b>Molecular Weight</b>	Calculated MW:11kDa

**Antigen Information**

<b>Gene Name</b>	S100A1 S100A
<b>Alternative Names</b>	Protein S100-A1;S-100 protein alpha chain;S-100 protein subunit alpha;S100 calcium-binding protein A1;
<b>Gene ID</b>	Human:6271
<b>SwissProt ID</b>	Human:P23297
<b>Immunogen</b>	Synthesized peptide derived from human S100A1 AA range: 1-50

**Background**

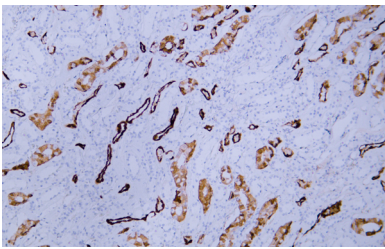
S100 calcium binding protein A1(S100A1) Homo sapiens The protein encoded by this gene is a member of the S100 family of proteins containing 2 EF-hand calcium-binding motifs. S100 proteins are localized in the cytoplasm and/or nucleus of a wide

range of cells, and involved in the regulation of a number of cellular processes such as cell cycle progression and differentiation. S100 genes include at least 13 members which are located as a cluster on chromosome 1q21. This protein may function in stimulation of Ca<sup>2+</sup>-induced Ca<sup>2+</sup> release, inhibition of microtubule assembly, and inhibition of protein kinase C-mediated phosphorylation. Reduced expression of this protein has been implicated in cardiomyopathies. [provided by RefSeq, Jul 2008],

## Research Area

Pathology

## Image Data



Human kidney tissue was stained with anti-S100A1 Antibody