

---

**Product Name: S100A4 Mouse Monoclonal Antibody****Catalog #: AMM22038**

For research use only.

**Summary**

<b>Description</b>	Mouse Monoclonal Antibody
<b>Host</b>	Mouse
<b>Application</b>	IHC,IF,ELISA
<b>Reactivity</b>	Human
<b>Conjugation</b>	Unconjugated
<b>Modification</b>	Unmodified
<b>Isotype</b>	IgG1,Kappa
<b>Clonality</b>	Monoclonal
<b>Form</b>	Liquid
<b>Storage</b>	Aliquot and store at -20°C (valid for 12 months). Avoid freeze/thaw cycles.
<b>Shipping</b>	Ice bags
<b>Buffer</b>	PBS, 50% glycerol, 0.05% Proclin 300, 0.05%BSA
<b>Purification</b>	The antibody was affinity-purified from ascites by affinity-chromatography using specific immunogen.

**Application**

<b>Dilution Ratio</b>	IHC 1:200-400;IF 1:50-200;ELISA 1:500-5000
<b>Molecular Weight</b>	Calculated MW:12kDa

**Antigen Information**

<b>Gene Name</b>	S100A4 CAPL MTS1
<b>Alternative Names</b>	
<b>Gene ID</b>	Human:6275
<b>SwissProt ID</b>	Human:P26447
<b>Immunogen</b>	Synthesized peptide derived from human S100A4 AA range: 50-101

**Background**

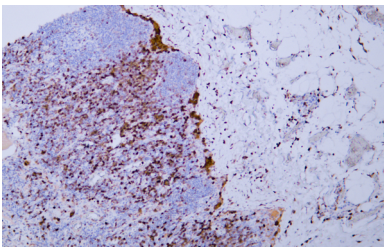
S100 calcium binding protein A4(S100A4) Homo sapiens The protein encoded by this gene is a member of the S100 family of proteins containing 2 EF-hand calcium-binding motifs. S100 proteins are localized in the cytoplasm and/or nucleus of a wide range of cells, and involved in the regulation of a number of cellular processes such as cell cycle progression and differentiation.

S100 genes include at least 13 members which are located as a cluster on chromosome 1q21. This protein may function in motility, invasion, and tubulin polymerization. Chromosomal rearrangements and altered expression of this gene have been implicated in tumor metastasis. Multiple alternatively spliced variants, encoding the same protein, have been identified. [provided by RefSeq, Jul 2008],

## Research Area

Pathology

## Image Data



Human malignant mesothelioma tissue was stained with Anti-S100A4 Antibody