

---

**Product Name: PGP 9.5 Mouse Monoclonal Antibody****Catalog #: AMM22035**

For research use only.

**Summary**

<b>Description</b>	Mouse Monoclonal Antibody
<b>Host</b>	Mouse
<b>Application</b>	IHC,ELISA,IF,
<b>Reactivity</b>	Human,Mouse,Rat
<b>Conjugation</b>	Unconjugated
<b>Modification</b>	Unmodified
<b>Isotype</b>	IgG1,Kappa
<b>Clonality</b>	Monoclonal
<b>Form</b>	Liquid
<b>Storage</b>	Aliquot and store at -20°C (valid for 12 months). Avoid freeze/thaw cycles.
<b>Shipping</b>	Ice bags
<b>Buffer</b>	PBS, 50% glycerol, 0.05% Proclin 300, 0.05%BSA
<b>Purification</b>	The antibody was affinity-purified from ascites by affinity-chromatography using specific immunogen.

**Application**

<b>Dilution Ratio</b>	IHC 1:200-400;ELISA 1:500-5000;IF 1:50-200
<b>Molecular Weight</b>	Calculated MW:25kDa,Observed MW:25kDa

**Antigen Information**

<b>Gene Name</b>	UCHL1
<b>Alternative Names</b>	
<b>Gene ID</b>	Human:7345
<b>SwissProt ID</b>	Human:P09936
<b>Immunogen</b>	Synthesized peptide derived from human PGP 9.5 AA range: 100-223

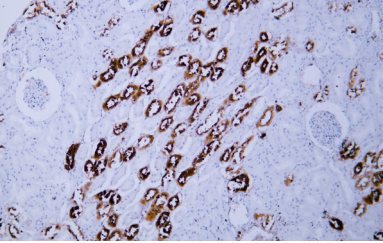
**Background**

The protein encoded by this gene belongs to the peptidase C12 family. This enzyme is a thiol protease that hydrolyzes a peptide bond at the C-terminal glycine of ubiquitin. This gene is specifically expressed in the neurons and in cells of the diffuse neuroendocrine system. Mutations in this gene may be associated with Parkinson disease.[provided by RefSeq, Sep 2009],

## Research Area

Pathology

## Image Data



Human kidney tissue was stained with Anti-PGP9.5 Antibody