
Product Name: Gastrin Mouse Monoclonal Antibody**Catalog #: AMM22023**

For research use only.

Summary

Description	Mouse Monoclonal Antibody
Host	Mouse
Application	IHC,IF,ELISA
Reactivity	Human
Conjugation	Unconjugated
Modification	Unmodified
Isotype	IgG1,Kappa
Clonality	Monoclonal
Form	Liquid
Storage	Aliquot and store at -20°C (valid for 12 months). Avoid freeze/thaw cycles.
Shipping	Ice bags
Buffer	PBS, 50% glycerol, 0.05% Proclin 300, 0.05%BSA
Purification	The antibody was affinity-purified from ascites by affinity-chromatography using specific immunogen.

Application

Dilution Ratio	IHC 1:200-400;IF 1:50-200;ELISA 1:500-5000
Molecular Weight	Calculated MW:11kDa

Antigen Information

Gene Name	GAST GAS
Alternative Names	
Gene ID	Human:2520
SwissProt ID	Human:P01350
Immunogen	Synthesized peptide derived from human Gastrin AA range: 50-101

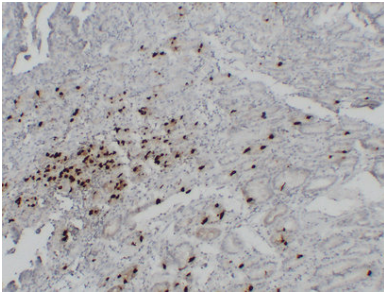
Background

Gastrin is a hormone whose main function is to stimulate secretion of hydrochloric acid by the gastric mucosa, which results in gastrin formation inhibition. This hormone also acts as a mitogenic factor for gastrointestinal epithelial cells. Gastrin has two biologically active peptide forms, G34 and G17. [provided by RefSeq, Jul 2008],

Research Area

Pathology

Image Data



Immunohistochemical analysis of paraffin-embedded Gastric adenocarcinoma. 1, Antibody was diluted at 1:200(4°,overnight). 2, Heat-induced epitope retrieval (HIER) was used for antigen retrieval. 3,Secondary antibody was diluted at 1:200 (room temperature, 30min).