

---

**Product Name: Cytokeratin 5/6(CK5/6) Mouse Monoclonal Antibody****Catalog #: AMM22000**

For research use only.

**Summary**

<b>Description</b>	Mouse Monoclonal Antibody
<b>Host</b>	Mouse
<b>Application</b>	IHC,ELISA
<b>Reactivity</b>	Human
<b>Conjugation</b>	Unconjugated
<b>Modification</b>	Unmodified
<b>Isotype</b>	IgG2a,Kappa
<b>Clonality</b>	Monoclonal
<b>Form</b>	Liquid
<b>Storage</b>	Aliquot and store at -20°C (valid for 12 months). Avoid freeze/thaw cycles.
<b>Shipping</b>	Ice bags
<b>Buffer</b>	PBS, 50% glycerol, 0.05% Proclin 300, 0.05%BSA
<b>Purification</b>	The antibody was affinity-purified from ascites by affinity-chromatography using specific immunogen.

**Application**

<b>Dilution Ratio</b>	IHC 1:200-400;ELISA 1:500-5000
<b>Molecular Weight</b>	Observed MW:60kDa,62kDa

**Antigen Information**

<b>Gene Name</b>	KRT5 KRT6A KRT6B KRT6C
<b>Alternative Names</b>	58 kDa cytokeratin;CK-5;CK5;Cytokeratin-5;Cytokeratin5;DDD;DDD1;EBS2;epidermolysis bullosa simplex 2 Dowling-Meara/Kobner/Weber-Cockayne types;K2C5_HUMAN;K5;keratin 5;epidermolysis bullosa simplex, Dowling-Meara/Kobner/Weber-Cockayne types;Keratin 5;Keratin;keratin complex 2, basic, gene 5;keratin, type II cytoskeletal 5;Keratin-5;Keratin5;KRT 5;Krt5;KRT5A;type II cytoskeletal 5;Type-II keratin Kb5;CK 6A;CK 6B;CK 6C;CK 6D;CK 6E;CK-6B;CK-6C;CK-6E;Cytokeratin 6a;Cytokeratin 6B;Cytokeratin 6C;Cytokeratin 6D;Cytokeratin 6E;Cytokeratin-6B;Cytokeratin-6C;Cytokeratin-6E;K2C6C_HUMAN;K6a keratin;K6b keratin;K6C;K6c keratin;K6d keratin;K6e keratin;Keratin;Keratin K6h;Keratin type II cytoskeletal 6A;Keratin type II cytoskeletal 6B;Keratin type II cytoskeletal 6C;Keratin type II

cytoskeletal 6D;Keratin type II cytoskeletal 6E;Keratin-6C;KRT6A;KRT6B;KRT6C;KRT6D;KRT6E;type II cytoskeletal 6C;Type-II keratin Kb12;58 kDa cytokeratin antibody;CK-5 antibody;CK5 antibody;Cytokeratin-5 antibody;Cytokeratin5 antibody;DDD antibody;DDD1 antibody;EBS2 antibody;epidermolysis bullosa simplex 2 Dowling-Meara/Kobner/Weber-Cockayne types antibody;K2C5\_HUMAN antibody;K5 antibody;keratin 5;epidermolysis bullosa simplex, Dowling-Meara/Kobner/Weber-Cockayne types;antibody;Keratin 5 antibody;Keratin antibody;keratin complex 2, basic, gene 5 antibody;keratin, type II cytoskeletal 5 antibody;Keratin-5 antibody;Keratin5 antibody;KRT 5 antibody;Krt5 antibody;KRT5A antibody;type II cytoskeletal 5 antibody;Type-II keratin Kb5 antibody

**Gene ID**

Human:3852

**SwissProt ID**

Human:P13647;P02538;P04259;P48668

**Immunogen**

Synthesized peptide derived from human Cytokeratin 5 and Cytokeratin 6 AA range: C terminal amino acids 500-590 of Cytokeratin 5 and N terminal amino acids 2-100 of Cytokeratin 6

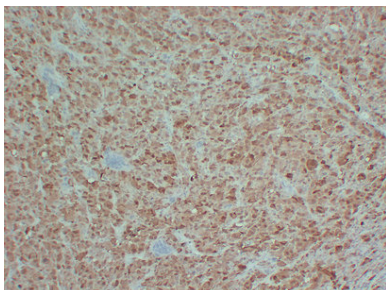
## Background

Keratins are a large family of proteins that form the intermediate filament cytoskeleton of epithelial cells, which are classified into two major sequence types. Type I keratins are a group of acidic intermediate filament proteins, including K9-K23, and the hair keratins Ha1-Ha8. Type II keratins are the basic or neutral counterparts to the acidic type I keratins, including K1-K8, and the hair keratins, Hb1-Hb6. This antibody can react with Cytokeratin 5 and Cytokeratin 6.

## Research Area

Pathology

## Image Data



Immunohistochemical analysis of paraffin-embedded Malignant melanoma. 1, Antibody was diluted at 1:200(4°,overnight). 2, Heat-induced epitope retrieval (HIER) was used for antigen retrieval. 3,Secondary antibody was diluted at 1:200 (room temperature, 30min).