
Product Name: CD61 Mouse Monoclonal Antibody**Catalog #: AMM21991**

For research use only.

Summary

Description	Mouse Monoclonal Antibody
Host	Mouse
Application	IHC,ELISA
Reactivity	Human,Mouse
Conjugation	Unconjugated
Modification	Unmodified
Isotype	IgG1,Kappa
Clonality	Monoclonal
Form	Liquid
Storage	Aliquot and store at -20°C (valid for 12 months). Avoid freeze/thaw cycles.
Shipping	Ice bags
Buffer	PBS, 50% glycerol, 0.05% Proclin 300, 0.05%BSA
Purification	The antibody was affinity-purified from ascites by affinity-chromatography using specific immunogen.

Application

Dilution Ratio	IHC 1:200-400;ELISA 1:500-5000
Molecular Weight	Calculated MW:87kDa,Observed MW:70kDa

Antigen Information

Gene Name	ITGB3 GP3A
Alternative Names	
Gene ID	Human:3690
SwissProt ID	Human:P05106
Immunogen	Synthesized peptide derived from human CD61 AA range: 1-100

Background

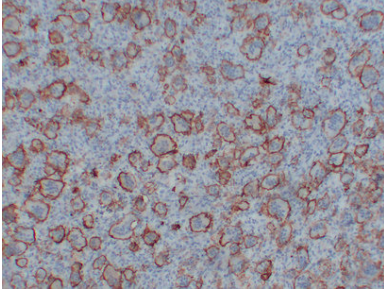
The ITGB3 protein product is the integrin beta chain beta 3. Integrins are integral cell-surface proteins composed of an alpha chain and a beta chain. A given chain may combine with multiple partners resulting in different integrins. Integrin beta 3 is found along with the alpha IIb chain in platelets. Integrins are known to participate in cell adhesion as well as cell-surface

mediated signalling. [provided by RefSeq, Jul 2008],

Research Area

Pathology

Image Data



Immunohistochemical analysis of paraffin-embedded Giant-cell tumor of bone. 1, Antibody was diluted at 1:200(4°,overnight). 2, Heat-induced epitope retrieval (HIER) was used for antigen retrieval. 3,Secondary antibody was diluted at 1:200 (room temperature, 30min).