
Product Name: Podoplanin Mouse Monoclonal Antibody**Catalog #: AMM21987**

For research use only.

Summary

Description	Mouse Monoclonal Antibody
Host	Mouse
Application	IHC,ELISA
Reactivity	Human
Conjugation	Unconjugated
Modification	Unmodified
Isotype	IgG1,Kappa
Clonality	Monoclonal
Form	Liquid
Storage	Aliquot and store at -20°C (valid for 12 months). Avoid freeze/thaw cycles.
Shipping	Ice bags
Buffer	PBS, 50% glycerol, 0.05% Proclin 300, 0.05%BSA
Purification	The antibody was affinity-purified from ascites by affinity-chromatography using specific immunogen.

Application

Dilution Ratio	IHC 1:50-200;ELISA 1:500-5000
Molecular Weight	Calculated MW:24kDa,Observed MW:36kDa

Antigen Information

Gene Name	PDPN GP36 PSEC0003 PSEC0025
Alternative Names	Podoplanin;Aggrus;Glycoprotein 36;Gp36;PA2.26 antigen;T1-alpha;T1A;
Gene ID	Human:10630
SwissProt ID	Human:Q86YL7,Mouse:Q62011,Rat:Q64294
Immunogen	Synthesized peptide derived from human Podoplanin AA range: 23-100

Background

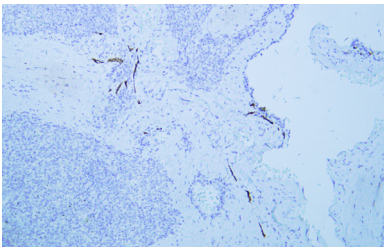
This gene encodes a type-I integral membrane glycoprotein with diverse distribution in human tissues. The physiological function of this protein may be related to its mucin-type character. The homologous protein in other species has been described as a differentiation antigen and influenza-virus receptor. The specific function of this protein has not been

determined but it has been proposed as a marker of lung injury. Alternatively spliced transcript variants encoding different isoforms have been identified. [provided by RefSeq, Jul 2008],

Research Area

Pathology

Image Data



Human spleen tissue was stained with Podoplanin Antibody