

---

**Product Name: Synaptophysin(Syn) Mouse Monoclonal Antibody****Catalog #: AMM21985**

For research use only.

**Summary**

<b>Description</b>	Mouse Monoclonal Antibody
<b>Host</b>	Mouse
<b>Application</b>	IHC,ELISA
<b>Reactivity</b>	Human,Mouse,Rat,Bovin
<b>Conjugation</b>	Unconjugated
<b>Modification</b>	Unmodified
<b>Isotype</b>	IgG1,Kappa
<b>Clonality</b>	Monoclonal
<b>Form</b>	Liquid
<b>Storage</b>	Aliquot and store at -20°C (valid for 12 months). Avoid freeze/thaw cycles.
<b>Shipping</b>	Ice bags
<b>Buffer</b>	PBS, 50% glycerol, 0.05% Proclin 300, 0.05%BSA
<b>Purification</b>	The antibody was affinity-purified from ascites by affinity-chromatography using specific immunogen.

**Application**

<b>Dilution Ratio</b>	IHC 1:200-400;ELISA 1:500-5000
<b>Molecular Weight</b>	Calculated MW:34kDa,Observed MW:38kDa

**Antigen Information**

<b>Gene Name</b>	SYP
<b>Alternative Names</b>	Major synaptic vesicle protein p38;MRX96;MRXSYP;Syn p38;Synaptophysin;Syp;SYPH;SYPH_HUMAN;SypI
<b>Gene ID</b>	Human:6855
<b>SwissProt ID</b>	Human:P08247,Mouse:Q62277,Rat:P07825
<b>Immunogen</b>	Synthesized peptide derived from human Synaptophysin AA range: 200-313

**Background**

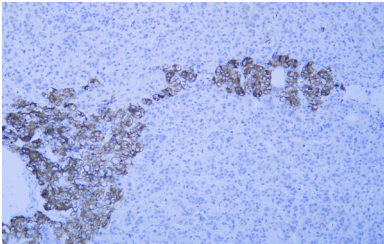
This gene encodes an integral membrane protein of small synaptic vesicles in brain and endocrine cells. The protein also binds cholesterol and is thought to direct targeting of vesicle-associated membrane protein 2 (synaptobrevin) to intracellular

compartments. Mutations in this gene are associated with X-linked mental retardation (XLMR). [provided by RefSeq, Aug 2011],

## Research Area

Pathology

## Image Data



Human adrenal gland tissue was stained with Anti-Synaptophysin Antibody