
Product Name: Stathmin Mouse Monoclonal Antibody**Catalog #: AMM21984**

For research use only.

Summary

Description	Mouse Monoclonal Antibody
Host	Mouse
Application	IHC,ELISA
Reactivity	Human,Rat
Conjugation	Unconjugated
Modification	Unmodified
Isotype	IgG2b,Kappa
Clonality	Monoclonal
Form	Liquid
Storage	Aliquot and store at -20°C (valid for 12 months). Avoid freeze/thaw cycles.
Shipping	Ice bags
Buffer	PBS, 50% glycerol, 0.05% Proclin 300, 0.05%BSA
Purification	The antibody was affinity-purified from ascites by affinity-chromatography using specific immunogen.

Application

Dilution Ratio	IHC 1:200-400;ELISA 1:500-5000
Molecular Weight	Calculated MW:17kDa,Observed MW:17kDa

Antigen Information

Gene Name	STMN1 C1orf215 LAP18 OP18
Alternative Names	C1orf215;Lag;LAP 18;LAP18;Leukemia associated phosphoprotein p18;Leukemia-associated phosphoprotein p18;Metablastin;Oncoprotein 18;OP 18;Op18;p18;p19;Phosphoprotein 19;Phosphoprotein p19;pp17;pp19;PR22;Pr22 protein;Prosolin;Protein Pr22;SMN;Stathmin;Stathmin1;STMN 1;Stmn1;STMN1_HUMAN
Gene ID	Human:3925
SwissProt ID	Human:P16949,Mouse:P54227,Rat:P13668
Immunogen	Synthesized peptide derived from human Stathmin AA range: 1-100

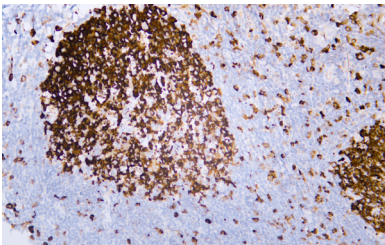
Background

This gene belongs to the stathmin family of genes. It encodes a ubiquitous cytosolic phosphoprotein proposed to function as an intracellular relay integrating regulatory signals of the cellular environment. The encoded protein is involved in the regulation of the microtubule filament system by destabilizing microtubules. It prevents assembly and promotes disassembly of microtubules. Multiple transcript variants encoding different isoforms have been found for this gene. [provided by RefSeq, Feb 2009],

Research Area

Pathology

Image Data



Human tonsil tissue was stained with Anti-Stathmin Antibody