

---

**Product Name: Stathmin Mouse Monoclonal Antibody****Catalog #: AMM21982**

For research use only.

**Summary**

<b>Description</b>	Mouse Monoclonal Antibody
<b>Host</b>	Mouse
<b>Application</b>	IHC,ELISA
<b>Reactivity</b>	Human,Mouse,Rat
<b>Conjugation</b>	Unconjugated
<b>Modification</b>	Unmodified
<b>Isotype</b>	IgG2a,Kappa
<b>Clonality</b>	Monoclonal
<b>Form</b>	Liquid
<b>Storage</b>	Aliquot and store at -20°C (valid for 12 months). Avoid freeze/thaw cycles.
<b>Shipping</b>	Ice bags
<b>Buffer</b>	PBS, 50% glycerol, 0.05% Proclin 300, 0.05%BSA
<b>Purification</b>	The antibody was affinity-purified from ascites by affinity-chromatography using specific immunogen.

**Application**

<b>Dilution Ratio</b>	IHC 1:200-400;ELISA 1:500-5000
<b>Molecular Weight</b>	Calculated MW:17kDa,Observed MW:17kDa

**Antigen Information**

<b>Gene Name</b>	STMN1 C1orf215 LAP18 OP18
<b>Alternative Names</b>	C1orf215;Lag;LAP 18;LAP18;Leukemia associated phosphoprotein p18;Leukemia-associated phosphoprotein p18;Metablastin;Oncoprotein 18;OP 18;Op18;p18;p19;Phosphoprotein 19;Phosphoprotein p19;pp17;pp19;PR22;Pr22 protein;Prosolin;Protein Pr22;SMN;Stathmin;Stathmin1;STMN 1;Stmn1;STMN1_HUMAN
<b>Gene ID</b>	Human:3925
<b>SwissProt ID</b>	Human:P16949,Mouse:P54227,Rat:P13668
<b>Immunogen</b>	Synthesized peptide derived from human Stathmin AA range: 1-100

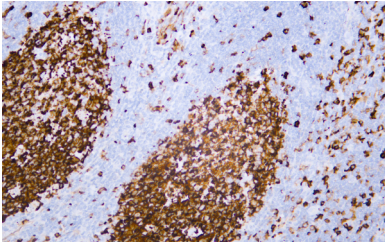
**Background**

This gene belongs to the stathmin family of genes. It encodes a ubiquitous cytosolic phosphoprotein proposed to function as an intracellular relay integrating regulatory signals of the cellular environment. The encoded protein is involved in the regulation of the microtubule filament system by destabilizing microtubules. It prevents assembly and promotes disassembly of microtubules. Multiple transcript variants encoding different isoforms have been found for this gene. [provided by RefSeq, Feb 2009],

## Research Area

Pathology

## Image Data



Human tonsil tissue was stained with Anti-Stathmin Antibody