
Product Name: Gastrin Mouse Monoclonal Antibody**Catalog #: AMM21975**

For research use only.

Summary

| | |
|---------------------|------------------------------------------------------------------------------------------------------|
| Description | Mouse Monoclonal Antibody |
| Host | Mouse |
| Application | IHC,IF,ELISA |
| Reactivity | Human |
| Conjugation | Unconjugated |
| Modification | Unmodified |
| Isotype | IgG2b,Kappa |
| Clonality | Monoclonal |
| Form | Liquid |
| Storage | Aliquot and store at -20°C (valid for 12 months). Avoid freeze/thaw cycles. |
| Shipping | Ice bags |
| Buffer | PBS, 50% glycerol, 0.05% Proclin 300, 0.05%BSA |
| Purification | The antibody was affinity-purified from ascites by affinity-chromatography using specific immunogen. |

Application

| | |
|-------------------------|--------------------------------------------|
| Dilution Ratio | IHC 1:200-400;IF 1:50-200;ELISA 1:500-5000 |
| Molecular Weight | Calculated MW:11kDa |

Antigen Information

| | |
|--------------------------|---------------------------------------------------------------------------------------------------------------------------------------------------------------------|
| Gene Name | GAST GAS Gastric mucin 6;Gastric Mucin;Gastric mucin-6;MUC 6;MUC-6;Muc6;MUC6 Fragment;MUC6 |
| Alternative Names | mucin;MUC6 mucin Fragment;MUC6_HUMAN;Mucin 6;Mucin 6 gastric;Mucin 6 oligomeric mucus/gel forming;Mucin glycoprotein Fragment;Mucin-6;Secretory mucin MUC6 Fragment |
| Gene ID | Human:2520 |
| SwissProt ID | Human:P01350,Mouse:P48757,Rat:P04563 |
| Immunogen | Synthesized peptide derived from human Gastrin AA range: 50-101 |

Background

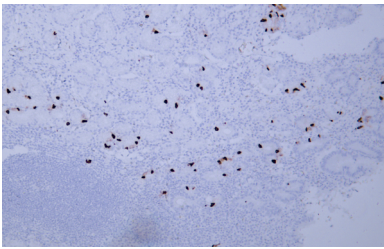
Gastrin is a hormone whose main function is to stimulate secretion of hydrochloric acid by the gastric mucosa, which results in

gastrin formation inhibition. This hormone also acts as a mitogenic factor for gastrointestinal epithelial cells. Gastrin has two biologically active peptide forms, G34 and G17. [provided by RefSeq, Jul 2008],

Research Area

Pathology

Image Data



Human gastric adenocarcinoma tissue was stained with Anti-Gastrin Antibody