
Product Name: Glucagon Mouse Monoclonal Antibody**Catalog #: AMM21974**

For research use only.

Summary

Description	Mouse Monoclonal Antibody
Host	Mouse
Application	IHC,IF,ELISA
Reactivity	Human,Mouse,Rat
Conjugation	Unconjugated
Modification	Unmodified
Isotype	IgG2b,Kappa
Clonality	Monoclonal
Form	Liquid
Storage	Aliquot and store at -20°C (valid for 12 months). Avoid freeze/thaw cycles.
Shipping	Ice bags
Buffer	PBS, 50% glycerol, 0.05% Proclin 300, 0.05%BSA
Purification	The antibody was affinity-purified from ascites by affinity-chromatography using specific immunogen.

Application

Dilution Ratio	IHC 1:200-400;IF 1:50-200;ELISA 1:500-5000
Molecular Weight	Calculated MW:20kDa

Antigen Information

Gene Name	GCG
Alternative Names	GCG;Glucagon;
Gene ID	Human:2641
SwissProt ID	Human:P01275
Immunogen	Synthesized peptide derived from human Glucagon AA range: 2-100

Background

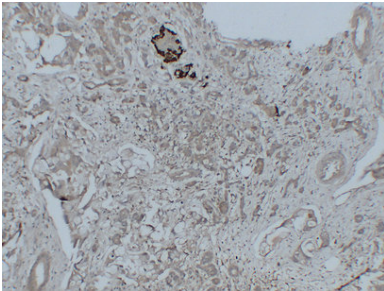
The protein encoded by this gene is actually a preproprotein that is cleaved into four distinct mature peptides. One of these, glucagon, is a pancreatic hormone that counteracts the glucose-lowering action of insulin by stimulating glycogenolysis and gluconeogenesis. Glucagon is a ligand for a specific G-protein linked receptor whose signalling pathway controls cell

proliferation. Two of the other peptides are secreted from gut endocrine cells and promote nutrient absorption through distinct mechanisms. Finally, the fourth peptide is similar to glicentin, an active enteroglucagon. [provided by RefSeq, Jul 2008],

Research Area

Pathology

Image Data



Immunohistochemical analysis of paraffin-embedded Pancreatic carcinoma. 1, Antibody was diluted at 1:200(4°,overnight). 2, Citric acid ,pH6.0 was used for antigen retrieval. 3,Secondary antibody was diluted at 1:200 (room temperature, 30min).