
Product Name: carcinoembryonic antigen(CEA) Mouse Monoclonal Antibody**Catalog #:** AMM21966

For research use only.

Summary

| | |
|---------------------|--|
| Description | Mouse Monoclonal Antibody |
| Host | Mouse |
| Application | IHC,IF,ELISA |
| Reactivity | Human |
| Conjugation | Unconjugated |
| Modification | Unmodified |
| Isotype | IgG2b,Kappa |
| Clonality | Monoclonal |
| Form | Liquid |
| Storage | Aliquot and store at -20°C (valid for 12 months). Avoid freeze/thaw cycles. |
| Shipping | Ice bags |
| Buffer | PBS, 50% glycerol, 0.05% Proclin 300, 0.05%BSA |
| Purification | The antibody was affinity-purified from ascites by affinity-chromatography using specific immunogen. |

Application

| | |
|-------------------------|---|
| Dilution Ratio | IHC 1:50-200;IF 1:50-200;ELISA 1:500-5000 |
| Molecular Weight | Calculated MW:76kDa,Observed MW:200kDa |

Antigen Information

| | |
|--------------------------|--|
| Gene Name | CEACAM5 CEA |
| Alternative Names | |
| Gene ID | Human:1048 |
| SwissProt ID | Human:P06731 |
| Immunogen | Synthesized peptide derived from human carcinoembryonic antigen(CEA) AA range: 600-702 |

Background

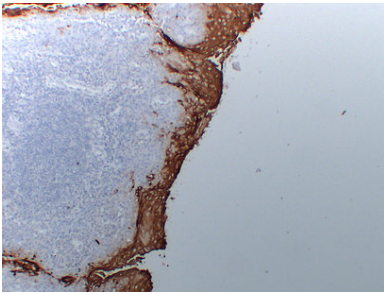
This gene encodes a cell surface glycoprotein that represents the founding member of the carcinoembryonic antigen (CEA) family of proteins. The encoded protein is used as a clinical biomarker for gastrointestinal cancers and may promote tumor

development through its role as a cell adhesion molecule. Additionally, the encoded protein may regulate differentiation, apoptosis, and cell polarity. This gene is present in a CEA family gene cluster on chromosome 19. Alternative splicing results in multiple transcript variants. [provided by RefSeq, Jul 2015],

Research Area

Pathology

Image Data



Immunohistochemical analysis of paraffin-embedded Tonsil. 1, Antibody was diluted at 1:200(4°,overnight). 2, Tris-EDTA,pH8.0 was used for antigen retrieval. 3,Secondary antibody was diluted at 1:200 (room temperature, 30min).