
Product Name: CD68 Mouse Monoclonal Antibody**Catalog #: AMM21965**

For research use only.

Summary

Description	Mouse Monoclonal Antibody
Host	Mouse
Application	IHC,ELISA
Reactivity	Human
Conjugation	Unconjugated
Modification	Unmodified
Isotype	IgG1,Kappa
Clonality	Monoclonal
Form	Liquid
Storage	Aliquot and store at -20°C (valid for 12 months). Avoid freeze/thaw cycles.
Shipping	Ice bags
Buffer	PBS, 50% glycerol, 0.05% Proclin 300, 0.05%BSA
Purification	The antibody was affinity-purified from ascites by affinity-chromatography using specific immunogen.

Application

Dilution Ratio	IHC 1:50-200;ELISA 1:500-5000
Molecular Weight	Calculated MW:35kDa,Observed MW:100-110kDa

Antigen Information

Gene Name	CD68
Alternative Names	
Gene ID	Human:968
SwissProt ID	Human:P34810
Immunogen	Synthesized peptide derived from human CD68 AA range: 250-354

Background

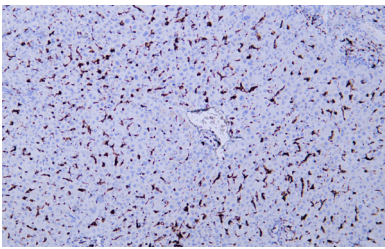
This gene encodes a 110-kD transmembrane glycoprotein that is highly expressed by human monocytes and tissue macrophages. It is a member of the lysosomal/endosomal-associated membrane glycoprotein (LAMP) family. The protein primarily localizes to lysosomes and endosomes with a smaller fraction circulating to the cell surface. It is a type I integral

membrane protein with a heavily glycosylated extracellular domain and binds to tissue- and organ-specific lectins or selectins. The protein is also a member of the scavenger receptor family. Scavenger receptors typically function to clear cellular debris, promote phagocytosis, and mediate the recruitment and activation of macrophages. Alternative splicing results in multiple transcripts encoding different isoforms. [provided by RefSeq, Jul 2008],

Research Area

Pathology

Image Data



Human liver tissue was stained with Anti-CD68 Antibody