
Product Name: CD2 Mouse Monoclonal Antibody**Catalog #: AMM21964**

For research use only.

Summary

Description	Mouse Monoclonal Antibody
Host	Mouse
Application	IHC,ELISA
Reactivity	Human
Conjugation	Unconjugated
Modification	Unmodified
Isotype	IgG2b,Kappa
Clonality	Monoclonal
Form	Liquid
Storage	Aliquot and store at -20°C (valid for 12 months). Avoid freeze/thaw cycles.
Shipping	Ice bags
Buffer	PBS, 50% glycerol, 0.05% Proclin 300, 0.05%BSA
Purification	The antibody was affinity-purified from ascites by affinity-chromatography using specific immunogen.

Application

Dilution Ratio	IHC 1:50-200;ELISA 1:500-5000
Molecular Weight	Calculated MW:39kDa,Observed MW:50kDa

Antigen Information

Gene Name	CD2 SRBC CD 2;CD2;CD2 antigen;p50;; sheep red blood cell receptor;CD2 antigen;CD2 molecule;CD2_HUMAN;Erythrocyte receptor;FLJ46032;LFA-2;LFA-3 receptor;LFA2;LFA3 receptor;Ly-37;Lymphocyte function antigen 2;lymphocyte-function antigen-2;OTTHUMP00000024366;Rosette receptor;Sheep erythrocyte receptor;SRBC;T cell surface antigen CD2;T-cell surface antigen CD2;T-cell surface antigen T11/Leu-5;T-lymphocyte surface CD2 antigen;T11
Alternative Names	
Gene ID	Human:914
SwissProt ID	Human:P06729,Mouse:P08920,Rat:P08921
Immunogen	Synthesized peptide derived from human CD2 AA range: 1-100

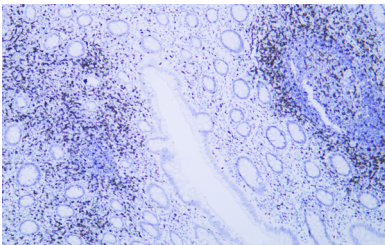
Background

The protein encoded by this gene is a surface antigen found on all peripheral blood T-cells. The encoded protein interacts with LFA3 (CD58) on antigen presenting cells to optimize immune recognition. A locus control region (LCR) has been found in the 3' flanking sequence of this gene. [provided by RefSeq, Jun 2016],

Research Area

Pathology

Image Data



Human appendix tissue was stained with anti-CD2 antibody.