

---

**Product Name: CD23 Mouse Monoclonal Antibody****Catalog #: AMM21963**

For research use only.

**Summary**

<b>Description</b>	Mouse Monoclonal Antibody
<b>Host</b>	Mouse
<b>Application</b>	IHC,IF,ELISA
<b>Reactivity</b>	Human
<b>Conjugation</b>	Unconjugated
<b>Modification</b>	Unmodified
<b>Isotype</b>	IgG1,Kappa
<b>Clonality</b>	Monoclonal
<b>Form</b>	Liquid
<b>Storage</b>	Aliquot and store at -20°C (valid for 12 months). Avoid freeze/thaw cycles.
<b>Shipping</b>	Ice bags
<b>Buffer</b>	PBS, 50% glycerol, 0.05% Proclin 300, 0.05%BSA
<b>Purification</b>	The antibody was affinity-purified from ascites by affinity-chromatography using specific immunogen.

**Application**

<b>Dilution Ratio</b>	IHC 1:200-400;IF 1:50-200;ELISA 1:500-5000
<b>Molecular Weight</b>	Calculated MW:36kDa

**Antigen Information**

<b>Gene Name</b>	FCER2 CD23A CLEC4J FCE2 IGEBF
<b>Alternative Names</b>	
<b>Gene ID</b>	Human:2208
<b>SwissProt ID</b>	Human:P06734
<b>Immunogen</b>	Synthesized peptide derived from human CD23 AA range: 200-321

**Background**

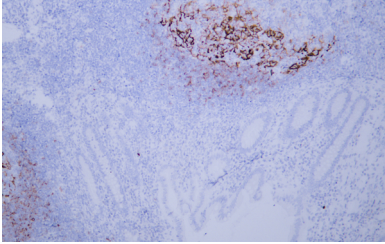
The protein encoded by this gene is a B-cell specific antigen, and a low-affinity receptor for IgE. It has essential roles in B cell growth and differentiation, and the regulation of IgE production. This protein also exists as a soluble secreted form, then functioning as a potent mitogenic growth factor. Alternatively spliced transcript variants encoding different isoforms have been

described for this gene.[provided by RefSeq, Jul 2011],

## Research Area

Pathology

## Image Data



Human appendix tissue was stained with anti-CD23 antibody.