
Product Name: CD21 Mouse Monoclonal Antibody**Catalog #: AMM21962**

For research use only.

Summary

Description	Mouse Monoclonal Antibody
Host	Mouse
Application	IHC,ELISA
Reactivity	Human
Conjugation	Unconjugated
Modification	Unmodified
Isotype	IgG1,Kappa
Clonality	Monoclonal
Form	Liquid
Storage	Aliquot and store at -20°C (valid for 12 months). Avoid freeze/thaw cycles.
Shipping	Ice bags
Buffer	PBS, 50% glycerol, 0.05% Proclin 300, 0.05%BSA
Purification	The antibody was affinity-purified from ascites by affinity-chromatography using specific immunogen.

Application

Dilution Ratio	IHC 1:50-200;ELISA 1:500-5000
Molecular Weight	Calculated MW:113kDa,Observed MW:160kDa

Antigen Information

Gene Name	CR2 C3DR
Alternative Names	
Gene ID	Human:1380
SwissProt ID	Human:P20023
Immunogen	Synthesized peptide derived from human CD21 AA range: 400-500

Background

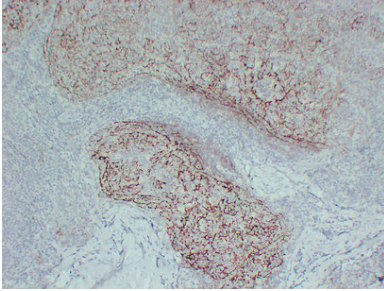
This gene encodes a membrane protein, which functions as a receptor for Epstein-Barr virus (EBV) binding on B and T lymphocytes. Genetic variations in this gene are associated with susceptibility to systemic lupus erythematosus type 9 (SLEB9). Alternatively spliced transcript variants encoding different isoforms have been found for this gene.[provided by RefSeq, Sep

2009],

Research Area

Pathology

Image Data



Immunohistochemical analysis of paraffin-embedded Follicular Lymphoma. 1, Antibody was diluted at 1:200(4°,overnight). 2, Citric acid ,pH6.0 was used for antigen retrieval. 3,Secondary antibody was diluted at 1:200 (room temperature, 30min).