
Product Name: Adrenocorticotropin(ACTH) Mouse Monoclonal Antibody**Catalog #: AMM21961**

For research use only.

Summary

Description	Mouse Monoclonal Antibody
Host	Mouse
Application	IHC,IF,ELISA
Reactivity	Human
Conjugation	Unconjugated
Modification	Unmodified
Isotype	IgG1,Kappa
Clonality	Monoclonal
Form	Liquid
Storage	Aliquot and store at -20°C (valid for 12 months). Avoid freeze/thaw cycles.
Shipping	Ice bags
Buffer	PBS, 50% glycerol, 0.05% Proclin 300, 0.05%BSA
Purification	The antibody was affinity-purified from ascites by affinity-chromatography using specific immunogen.

Application

Dilution Ratio	IHC 1:200-400;IF 1:50-200;ELISA 1:500-5000
Molecular Weight	Calculated MW:29kDa

Antigen Information

Gene Name	POMC
Alternative Names	
Gene ID	Human:5443
SwissProt ID	Human:P01189
Immunogen	Synthesized peptide derived from human Adrenocorticotropin(ACTH) AA range: 100-200

Background

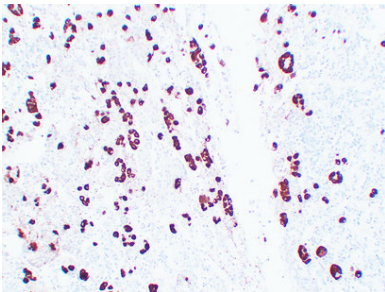
This gene encodes a preproprotein that undergoes extensive, tissue-specific, post-translational processing via cleavage by subtilisin-like enzymes known as prohormone convertases. There are eight potential cleavage sites within the preproprotein and, depending on tissue type and the available convertases, processing may yield as many as ten biologically active peptides

involved in diverse cellular functions. The encoded protein is synthesized mainly in corticotroph cells of the anterior pituitary where four cleavage sites are used; adrenocorticotrophin, essential for normal steroidogenesis and the maintenance of normal adrenal weight, and lipotropin beta are the major end products. In other tissues, including the hypothalamus, placenta, and epithelium, all cleavage sites may be used, giving rise to peptides with roles in pain and energy homeostasis, melanocyte stimulation, and immune modulation.

Research Area

Pathology

Image Data



Immunohistochemical analysis of paraffin-embedded Pituitary adenoma. 1, Antibody was diluted at 1:200(4°,overnight). 2, Tris-EDTA,pH8.0 was used for antigen retrieval. 3,Secondary antibody was diluted at 1:200 (room temperature, 30min).