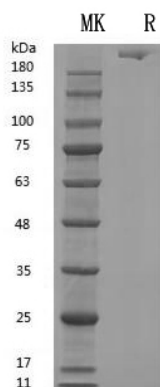

Summary

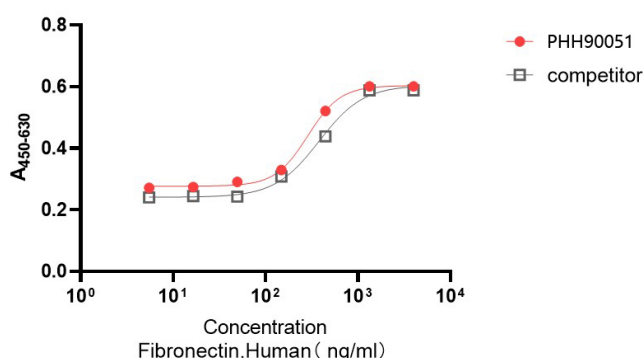
| | |
|------------------------------|--|
| Name | Fibronectin |
| Purity | Greater than 95% as determined by reducing SDS-PAGE |
| Endotoxin level | ≤10 EU/mg |
| Construction | Recombinant Human Fibronectin is produced by our Mammalian cell expression system and the target gene encoding Gln32-Pro1908 is expressed. |
| Accession # | P02751 |
| Tag | Tag free |
| Host | Mammalian cell |
| Species | Human |
| Predicted MW | 206 kDa |
| Form | Lyophilized |
| Buffer | PBS,5% mannitol and 0.01% Tween 80, pH7.4 |
| Shipping | The product is shipped with ice bag. Upon receipt, store it immediately at the temperature listed below. |
| Stability&Storage | 36 months at -20°C to -80°C in lyophilized state.6 months at -20°C to -80°C under sterile conditions after reconstitution.7-10 days at 2°C to 8°C under sterile conditions after reconstitution.Please minimize freeze-thaw cycles. |
| Reconstitution | Always centrifuge tubes before opening. Do not mix by vortex or pipetting. It is not recommended to reconstitute to a concentration less than 100µg/ml. Dissolve the lyophilized protein in distilled water. Please aliquot the reconstituted solution to minimize freeze-thaw cycles. |

SDS-PAGE image

Product Name: GMP Recombinant Human Fibronectin
Catalog#: PHH90051



Bioactivity image



Measured by the ability of the immobilized protein to support the adhesion of NIH3T3 mouse embryonic fibroblast cells. The ED50 for this effect is 35.0-420 ng/mL.

Background

Alternative Names

FN; Cold-insoluble globulin; CIG; FN; Fibronectin 1

References

Fibronectin (Fn) is a glycoprotein whose size ranges from 230 to 270 kDa and usually exists as a dimer, covalently linked by a pair of disulfide bonds at the C-termini. Each monomer consists of three repeating units: 12 Type I, 2 Type II, and 15–17 Type III domains which combined account for 90% of the FN sequence. The extracellular matrix (ECM) plays a key role as both structural scaffold and regulator of cell signal transduction in tissues. Fibronectin is one of the major ECM proteins in the trabecular meshwork (TM). It is found in the sheath material surrounding the elastin tendons that enter the TM from the

Product Name: GMP Recombinant Human Fibronectin
Catalog#: PHH90051



ciliary muscle within the ciliary body. In times of ECM assembly and turnover, cells upregulate assembly of the ECM protein, FN. FN is assembled by cells into viscoelastic fibrils that can bind upward of 40 distinct growth factors and cytokines. These fibrils play a key role in assembling a provisional ECM during embryonic development and wound healing. Fibril assembly is also often upregulated during disease states, including cancer and fibrotic diseases.

Note

For research use only .