

**Product Name: ZNF76 Rabbit Polyclonal Antibody**  
**Catalog #: APRab20285**



## Summary

<b>Production Name</b>	ZNF76 Rabbit Polyclonal Antibody
<b>Description</b>	Rabbit Polyclonal Antibody
<b>Host</b>	Rabbit
<b>Application</b>	IHC,ELISA
<b>Reactivity</b>	Human,Rat,Mouse

## Performance

<b>Conjugation</b>	Unconjugated
<b>Modification</b>	Unmodified
<b>Isotype</b>	IgG
<b>Clonality</b>	Polyclonal
<b>Form</b>	Liquid
<b>Storage</b>	Store at 4°C short term. Aliquot and store at -20°C long term. Avoid freeze/thaw cycles.
<b>Buffer</b>	Liquid in PBS containing 50% glycerol, 0.5% BSA and 0.02% New type preservative N.
<b>Purification</b>	Affinity purification

## Immunogen

<b>Gene Name</b>	ZNF76
<b>Alternative Names</b>	ZNF76; D6S229E; ZNF523; Zinc finger protein 76; Zinc finger protein 523
<b>Gene ID</b>	7629.0
<b>SwissProt ID</b>	P36508.The antiserum was produced against synthesized peptide derived from human ZNF76. AA range:116-165

## Application

<b>Dilution Ratio</b>	IHC 1:100-1:300 ELISA: 1:10000
<b>Molecular Weight</b>	

## Background

function:May be involved in transcriptional regulation.,similarity:Belongs to the krueppel C2H2-type zinc-finger protein

**Product Name: ZNF76 Rabbit Polyclonal Antibody**  
**Catalog #: APRab20285**

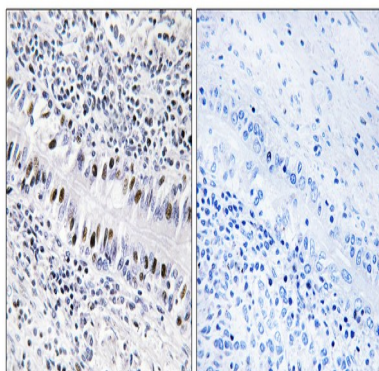
---



family, similarity: Contains 7 C2H2-type zinc fingers, tissue specificity: Testis, function: May be involved in transcriptional regulation, similarity: Belongs to the krueppel C2H2-type zinc-finger protein family, similarity: Contains 7 C2H2-type zinc fingers, tissue specificity: Testis,

## Research Area

## Image Data



Immunohistochemistry analysis of paraffin-embedded human lung carcinoma, using ZNF76 Antibody. The picture on the right is blocked with the synthesized peptide.

## Note

For research use only.