

**Product Name: ZNF608 Rabbit Polyclonal Antibody**  
**Catalog #: APRab20276**



## Summary

<b>Production Name</b>	ZNF608 Rabbit Polyclonal Antibody
<b>Description</b>	Rabbit Polyclonal Antibody
<b>Host</b>	Rabbit
<b>Application</b>	WB,IHC,ELISA
<b>Reactivity</b>	Human,Mouse

## Performance

<b>Conjugation</b>	Unconjugated
<b>Modification</b>	Unmodified
<b>Isotype</b>	IgG
<b>Clonality</b>	Polyclonal
<b>Form</b>	Liquid
<b>Storage</b>	Store at 4°C short term. Aliquot and store at -20°C long term. Avoid freeze/thaw cycles.
<b>Buffer</b>	Liquid in PBS containing 50% glycerol, 0.5% BSA and 0.02% New type preservative N.
<b>Purification</b>	Affinity purification

## Immunogen

<b>Gene Name</b>	ZNF608
<b>Alternative Names</b>	ZNF608; KIAA1281; Zinc finger protein 608; Renal carcinoma antigen NY-REN-36
<b>Gene ID</b>	57507.0
<b>SwissProt ID</b>	Q9ULD9.The antiserum was produced against synthesized peptide derived from human ZNF608. AA range:1231-1280

## Application

<b>Dilution Ratio</b>	WB 1:500 - 1:2000. IHC 1:100 - 1:300. ELISA: 1:5000..
<b>Molecular Weight</b>	160kD

## Background

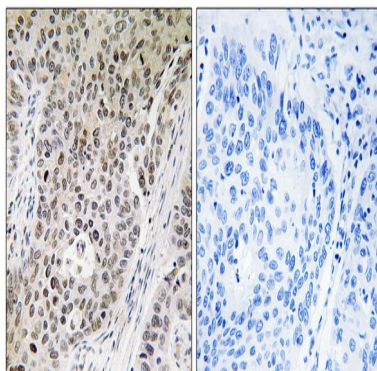
**Product Name: ZNF608 Rabbit Polyclonal Antibody**  
**Catalog #: APRab20276**



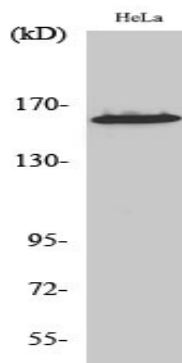
miscellaneous:Antigen recognized by autologous antibody in patients with renal-cell carcinoma.,PTM:Phosphorylated upon DNA damage, probably by ATM or ATR.,similarity:Contains 1 C2H2-type zinc finger.,miscellaneous:Antigen recognized by autologous antibody in patients with renal-cell carcinoma.,PTM:Phosphorylated upon DNA damage, probably by ATM or ATR.,similarity:Contains 1 C2H2-type zinc finger.,

## Research Area

## Image Data



Immunohistochemistry analysis of paraffin-embedded human lung carcinoma tissue, using ZNF608 Antibody. The picture on the right is blocked with the synthesized peptide.



Western Blot analysis of various cells using ZNF608 Polyclonal Antibody diluted at 1 : 500. Secondary antibody was diluted at 1:20000

## Note

For research use only.