

Product Name: ZNF295 Rabbit Polyclonal Antibody
Catalog #: APRab20258



Summary

Production Name	ZNF295 Rabbit Polyclonal Antibody
Description	Rabbit Polyclonal Antibody
Host	Rabbit
Application	IHC,ELISA
Reactivity	Human,Mouse

Performance

Conjugation	Unconjugated
Modification	Unmodified
Isotype	IgG
Clonality	Polyclonal
Form	Liquid
Storage	Store at 4°C short term. Aliquot and store at -20°C long term. Avoid freeze/thaw cycles.
Buffer	Liquid in PBS containing 50% glycerol, 0.5% BSA and 0.02% New type preservative N.
Purification	Affinity purification

Immunogen

Gene Name	ZNF295
Alternative Names	ZNF295; KIAA1227; ZBTB21; Zinc finger protein 295; Zinc finger and BTB domain-containing protein 21
Gene ID	49854.0
SwissProt ID	Q9ULJ3.The antiserum was produced against synthesized peptide derived from human ZNF295. AA range:731-780

Application

Dilution Ratio	IHC 1:100-1:300 ELISA: 1:10000
Molecular Weight	

Background

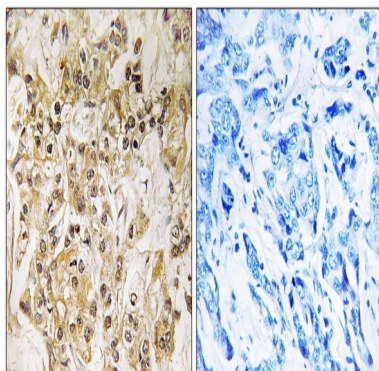
Product Name: ZNF295 Rabbit Polyclonal Antibody
Catalog #: APRab20258



function:May be involved in transcriptional regulation.,PTM:Phosphorylated upon DNA damage, probably by ATM or ATR.,similarity:Contains 1 BTB (POZ) domain.,similarity:Contains 8 C2H2-type zinc fingers.,function:May be involved in transcriptional regulation.,PTM:Phosphorylated upon DNA damage, probably by ATM or ATR.,similarity:Contains 1 BTB (POZ) domain.,similarity:Contains 8 C2H2-type zinc fingers.,

Research Area

Image Data



Immunohistochemistry analysis of paraffin-embedded human breast carcinoma tissue, using ZNF295 Antibody. The picture on the right is blocked with the synthesized peptide.

Note

For research use only.