

Product Name: ZNF232 Rabbit Polyclonal Antibody
Catalog #: APRab20254



Summary

Production Name	ZNF232 Rabbit Polyclonal Antibody
Description	Rabbit Polyclonal Antibody
Host	Rabbit
Application	IHC,ELISA
Reactivity	Human,Rat,Mouse

Performance

Conjugation	Unconjugated
Modification	Unmodified
Isotype	IgG
Clonality	Polyclonal
Form	Liquid
Storage	Store at 4°C short term. Aliquot and store at -20°C long term. Avoid freeze/thaw cycles.
Buffer	Liquid in PBS containing 50% glycerol, 0.5% BSA and 0.02% New type preservative N.
Purification	Affinity purification

Immunogen

Gene Name	ZNF232
Alternative Names	ZNF232; ZSCAN11; Zinc finger protein 232; Zinc finger and SCAN domain-containing protein 11
Gene ID	7775.0
SwissProt ID	Q9UNY5.The antiserum was produced against synthesized peptide derived from human ZNF232. AA range:171-220

Application

Dilution Ratio	IHC 1:100-1:300 ELISA: 1:5000
Molecular Weight	

Background

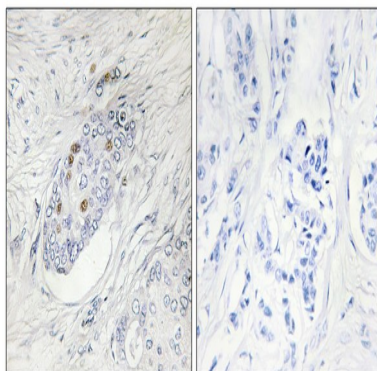
Product Name: ZNF232 Rabbit Polyclonal Antibody
Catalog #: APRab20254



function:May be involved in transcriptional regulation.,similarity:Belongs to the krueppel C2H2-type zinc-finger protein family.,similarity:Contains 1 SCAN box domain.,similarity:Contains 5 C2H2-type zinc fingers.,tissue specificity:Ubiquitous. Higher expression seen in the liver, testis and ovary.,function:May be involved in transcriptional regulation.,similarity:Belongs to the krueppel C2H2-type zinc-finger protein family.,similarity:Contains 1 SCAN box domain.,similarity:Contains 5 C2H2-type zinc fingers.,tissue specificity:Ubiquitous. Higher expression seen in the liver, testis and ovary.,

Research Area

Image Data



Immunohistochemistry analysis of paraffin-embedded human breast carcinoma, using ZNF232 Antibody. The picture on the right is blocked with the synthesized peptide.

Note

For research use only.