

Product Name: Zhangfei Rabbit Polyclonal Antibody
Catalog #: APRab20099



Summary

Production Name	Zhangfei Rabbit Polyclonal Antibody
Description	Rabbit Polyclonal Antibody
Host	Rabbit
Application	IF,ELISA
Reactivity	Human,Mouse

Performance

Conjugation	Unconjugated
Modification	Unmodified
Isotype	IgG
Clonality	Polyclonal
Form	Liquid
Storage	Store at 4°C short term. Aliquot and store at -20°C long term. Avoid freeze/thaw cycles.
Buffer	Liquid in PBS containing 50% glycerol, 0.5% BSA and 0.02% New type preservative N.
Purification	Affinity purification

Immunogen

Gene Name	CREBZF
Alternative Names	CREBZF; ZF; CREB/ATF bZIP transcription factor; Host cell factor-binding transcription factor Zhangfei; HCF-binding transcription factor Zhangfei
Gene ID	58487.0
SwissProt ID	Q9NS37.The antiserum was produced against synthesized peptide derived from human CREBZF. AA range:221-270

Application

Dilution Ratio	IF 1:200-1:1000. ELISA: 1:10000.
Molecular Weight	26kD

Background

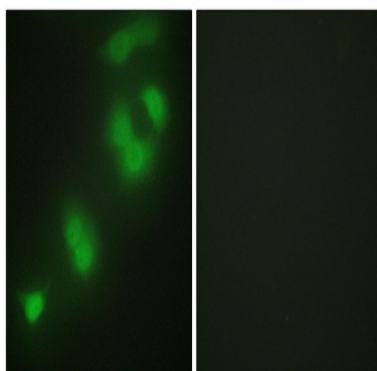
Product Name: Zhangfei Rabbit Polyclonal Antibody
Catalog #: APRab20099



function:Strongly activates transcription when bound to HCFC1. Suppresses the expression of HSV proteins in cells infected with the virus in a HCFC1-dependent manner. Also suppresses the HCFC1-dependent transcriptional activation by CREB3 and reduces the amount of CREB3 in the cell. Able to down-regulate expression of some cellular genes in CREBZF-expressing cells.,miscellaneous:Named Zhangfei after a legendary Chinese warrior who was contemporary with Luman in around 220 AD.,similarity:Belongs to the bZIP family. ATF subfamily.,similarity:Contains 1 bZIP domain.,subcellular location:Colocalizes at punctate nuclear structures with CREB3 and HCFC1.,subunit:Interacts with HCFC1, causing suppression of CREB3 transcriptional activity.,tissue specificity:In adults, expressed most abundantly in heart, liver and skeletal muscle, moderately abundant in kidney and pancreas, and barely detectable in lungs. In fetal tissues, expressed most abundantly in kidney and very low amounts in heart, lung and liver.,function:Strongly activates transcription when bound to HCFC1. Suppresses the expression of HSV proteins in cells infected with the virus in a HCFC1-dependent manner. Also suppresses the HCFC1-dependent transcriptional activation by CREB3 and reduces the amount of CREB3 in the cell. Able to down-regulate expression of some cellular genes in CREBZF-expressing cells.,miscellaneous:Named Zhangfei after a legendary Chinese warrior who was contemporary with Luman in around 220 AD.,similarity:Belongs to the bZIP family. ATF subfamily.,similarity:Contains 1 bZIP domain.,subcellular location:Colocalizes at punctate nuclear structures with CREB3 and HCFC1.,subunit:Interacts with HCFC1, causing suppression of CREB3 transcriptional activity.,tissue specificity:In adults, expressed most abundantly in heart, liver and skeletal muscle, moderately abundant in kidney and pancreas, and barely detectable in lungs. In fetal tissues, expressed most abundantly in kidney and very low amounts in heart, lung and liver.,

Research Area

Image Data



Immunofluorescence analysis of HepG2 cells, using CREBZF Antibody. The picture on the right is blocked with the synthesized peptide.

Note

For research use only.

Product Name: Zhangfei Rabbit Polyclonal Antibody
Catalog #: APRab20099

