

Product Name: ZBTB40 Rabbit Polyclonal Antibody
Catalog #: APRab20046



Summary

Production Name	ZBTB40 Rabbit Polyclonal Antibody
Description	Rabbit Polyclonal Antibody
Host	Rabbit
Application	WB,IHC,
Reactivity	Human,Mouse

Performance

Conjugation	Unconjugated
Modification	Unmodified
Isotype	IgG
Clonality	Polyclonal
Form	Liquid
Storage	Store at 4°C short term. Aliquot and store at -20°C long term. Avoid freeze/thaw cycles.
Buffer	Liquid in PBS containing 50% glycerol, 0.5% BSA and 0.02% New type preservative N.
Purification	Affinity purification

Immunogen

Gene Name	ZBTB40
Alternative Names	ZBTB40; KIAA0478; Zinc finger and BTB domain-containing protein 40
Gene ID	9923.0
SwissProt ID	Q9NUA8.The antiserum was produced against synthesized peptide derived from human ZBTB40. AA range:1121-1170

Application

Dilution Ratio	WB 1:500 - 1:2000. IHC 1:100 - 1:300. ELISA: 1:10000..
Molecular Weight	140kD

Background

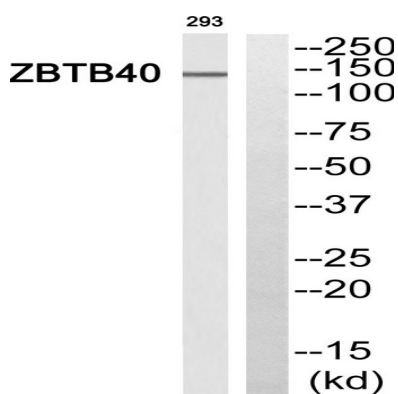
Product Name: ZBTB40 Rabbit Polyclonal Antibody
Catalog #: APRab20046



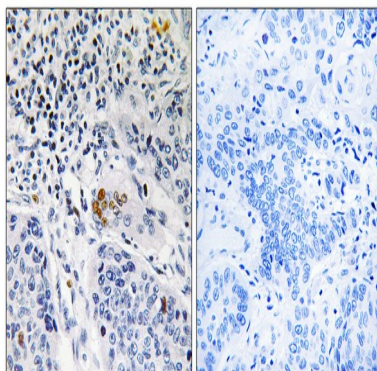
function: May be involved in transcriptional regulation., PTM: Phosphorylated upon DNA damage, probably by ATM or ATR., similarity: Belongs to the krueppel C2H2-type zinc-finger protein family., similarity: Contains 1 BTB (POZ) domain., similarity: Contains 12 C2H2-type zinc fingers., function: May be involved in transcriptional regulation., PTM: Phosphorylated upon DNA damage, probably by ATM or ATR., similarity: Belongs to the krueppel C2H2-type zinc-finger protein family., similarity: Contains 1 BTB (POZ) domain., similarity: Contains 12 C2H2-type zinc fingers.,

Research Area

Image Data

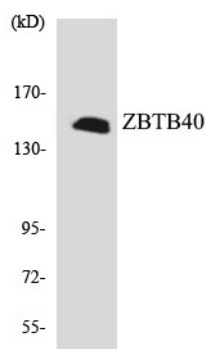


Western blot analysis of ZBTB40 Antibody. The lane on the right is blocked with the ZBTB40 peptide.

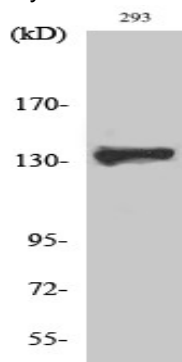


Immunohistochemistry analysis of paraffin-embedded human lung carcinoma tissue, using ZBTB40 Antibody. The picture on the right is blocked with the synthesized peptide.

Product Name: ZBTB40 Rabbit Polyclonal Antibody
Catalog #: APRab20046



Western blot analysis of the lysates from HUVEC cells using ZBTB40 antibody.



Western Blot analysis of various cells using ZBTB40 Polyclonal Antibody. Secondary antibody was diluted at 1:20000 cells nucleus extracted by Minute TM Cytoplasmic and Nuclear Fractionation kit (SC-003, Invent biotech, MN, USA) .

Note

For research use only.