

**Product Name: YEATS2 Rabbit Polyclonal Antibody**  
**Catalog #: APRab19990**



## Summary

<b>Production Name</b>	YEATS2 Rabbit Polyclonal Antibody
<b>Description</b>	Rabbit Polyclonal Antibody
<b>Host</b>	Rabbit
<b>Application</b>	WB,IHC,ELISA
<b>Reactivity</b>	Human,Rat,Mouse

## Performance

<b>Conjugation</b>	Unconjugated
<b>Modification</b>	Unmodified
<b>Isotype</b>	IgG
<b>Clonality</b>	Polyclonal
<b>Form</b>	Liquid
<b>Storage</b>	Store at 4°C short term. Aliquot and store at -20°C long term. Avoid freeze/thaw cycles.
<b>Buffer</b>	Liquid in PBS containing 50% glycerol, 0.5% BSA and 0.02% New type preservative N.
<b>Purification</b>	Affinity purification

## Immunogen

<b>Gene Name</b>	YEATS2
<b>Alternative Names</b>	YEATS2; KIAA1197; YEATS domain-containing protein 2
<b>Gene ID</b>	55689.0
<b>SwissProt ID</b>	Q9ULM3.The antiserum was produced against synthesized peptide derived from human YEATS2. AA range:341-390

## Application

<b>Dilution Ratio</b>	WB 1:500 - 1:2000. IHC 1:100 - 1:300. ELISA: 1:5000..
<b>Molecular Weight</b>	150kD

## Background

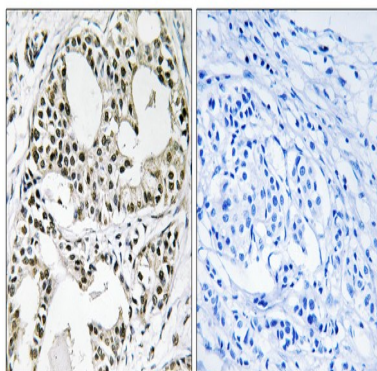
**Product Name: YEATS2 Rabbit Polyclonal Antibody**  
**Catalog #: APRab19990**



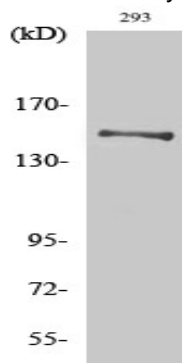
YEATS2 is a scaffolding subunit of the ADA2A (TADA2A; MIM 602276)-containing (ATAC) histone acetyltransferase complex (Wang et al., 2008 [PubMed 18838386]).[supplied by OMIM, Apr 2010],PTM:Phosphorylated upon DNA damage, probably by ATM or ATR.,similarity:Contains 1 YEATS domain.,

## Research Area

## Image Data



Immunohistochemistry analysis of paraffin-embedded human breast carcinoma, using YEATS2 Antibody. The picture on the right is blocked with the synthesized peptide.



Western Blot analysis of various cells using YEATS2 Polyclonal Antibody. Secondary antibody was diluted at 1:20000 cells nucleus extracted by Minute TM Cytoplasmic and Nuclear Fractionation kit (SC-003, Invent biotech, MN, USA) .

## Note

For research use only.