

**Product Name: XRN2 Rabbit Polyclonal Antibody**  
**Catalog #: APRab19977**



## Summary

<b>Production Name</b>	XRN2 Rabbit Polyclonal Antibody
<b>Description</b>	Rabbit Polyclonal Antibody
<b>Host</b>	Rabbit
<b>Application</b>	IHC, WB, ELISA
<b>Reactivity</b>	Human, Mouse, Monkey

## Performance

<b>Conjugation</b>	Unconjugated
<b>Modification</b>	Unmodified
<b>Isotype</b>	IgG
<b>Clonality</b>	Polyclonal
<b>Form</b>	Liquid
<b>Storage</b>	Store at 4°C short term. Aliquot and store at -20°C long term. Avoid freeze/thaw cycles.
<b>Buffer</b>	Liquid in PBS containing 50% glycerol, 0.5% BSA and 0.02% New type preservative N.
<b>Purification</b>	Affinity purification

## Immunogen

<b>Gene Name</b>	XRN2
<b>Alternative Names</b>	XRN2; 5'-3' exoribonuclease 2; DHM1-like protein; DHP protein
<b>Gene ID</b>	22803.0
<b>SwissProt ID</b>	Q9H0D6. The antiserum was produced against synthesized peptide derived from human XRN2. AA range: 81-130

## Application

<b>Dilution Ratio</b>	WB 1:500 - 1:2000. IHC 1:100 - 1:300. ELISA: 1:20000..
<b>Molecular Weight</b>	108kD

## Background

**Product Name: XRN2 Rabbit Polyclonal Antibody**  
**Catalog #: APRab19977**

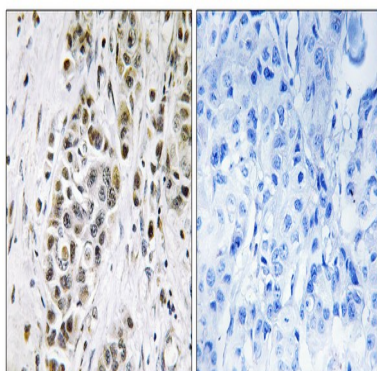


This gene encodes a 5'-3' exonuclease that promotes transcription termination at cotranscriptional cleavage sites. Alternative splicing results in multiple transcript variants encoding different isoforms. [provided by RefSeq, Dec 2015], catalytic activity: Exonucleolytic cleavage in the 5' to 3'-direction to yield nucleoside 5'-phosphates., function: Possesses 5'→3' exoribonuclease activity (By similarity). May promote the termination of transcription by RNA polymerase II. During transcription termination, cleavage at the polyadenylation site liberates a 5' fragment which is subsequently processed to form the mature mRNA and a 3' fragment which remains attached to the elongating polymerase. The processive degradation of this 3' fragment by this protein may promote termination of transcription., similarity: Belongs to the 5'-3' exonuclease family. XRN2/RAT1 subfamily., similarity: Contains 1 CCHC-type zinc finger., tissue specificity: Expressed in the spleen, thymus, prostate, testis, ovary, small intestine, colon, peripheral blood leukocytes, heart, brain, placenta, lung, liver, skeletal muscle, kidney, and pancreas. Isoform 2 is expressed predominantly in peripheral blood leukocytes.,

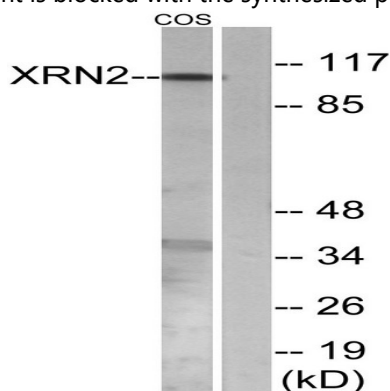
## Research Area

RNA degradation;

## Image Data



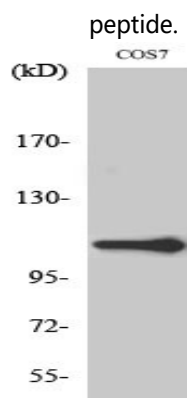
Immunohistochemistry analysis of paraffin-embedded human breast carcinoma tissue, using XRN2 Antibody. The picture on the right is blocked with the synthesized peptide.



Western blot analysis of lysates from COS7 cells, using XRN2 Antibody. The lane on the right is blocked with the synthesized

**Product Name: XRN2 Rabbit Polyclonal Antibody**  
**Catalog #: APRab19977**

---



Western Blot analysis of various cells using XRN2 Polyclonal Antibody diluted at 1: 1000. Secondary antibody was diluted at 1:20000 cells nucleus extracted by Minute TM Cytoplasmic and Nuclear Fractionation kit (SC-003, Invent biotech, MN, USA) .

### **Note**

For research use only.