

Summary

Production Name	XRCC2 Rabbit Polyclonal Antibody
Description	Rabbit Polyclonal Antibody
Host	Rabbit
Application	WB,IHC,ELISA
Reactivity	Human,Rat,Mouse

Performance

Conjugation	Unconjugated
Modification	Unmodified
Isotype	IgG
Clonality	Polyclonal
Form	Liquid
Storage	Store at 4°C short term. Aliquot and store at -20°C long term. Avoid freeze/thaw cycles.
Buffer	Liquid in PBS containing 50% glycerol, 0.5% BSA and 0.02% New type preservative N.
Purification	Affinity purification

Immunogen

Gene Name	XRCC2
Alternative Names	XRCC2; DNA repair protein XRCC2; X-ray repair cross-complementing protein 2
Gene ID	7516.0
SwissProt ID	O43543.The antiserum was produced against synthesized peptide derived from human XRCC2. AA range:211-260

Application

Dilution Ratio	WB 1:500 - 1:2000. IHC 1:100 - 1:300. ELISA: 1:10000..
Molecular Weight	32kD

Background

Product Name: XRCC2 Rabbit Polyclonal Antibody
Catalog #: AP Rab19972

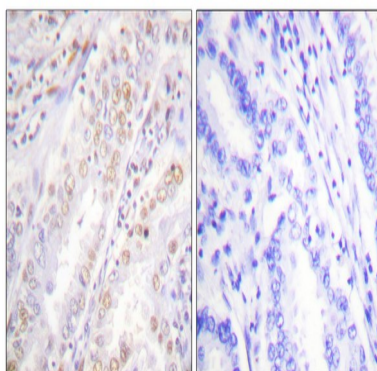


This gene encodes a member of the RecA/Rad51-related protein family that participates in homologous recombination to maintain chromosome stability and repair DNA damage. This gene is involved in the repair of DNA double-strand breaks by homologous recombination and it functionally complements Chinese hamster *irs1*, a repair-deficient mutant that exhibits hypersensitivity to a number of different DNA-damaging agents. [provided by RefSeq, Jul 2008],function:Involved in the homologous recombination repair (HRR) pathway of double-stranded DNA, thought to repair chromosomal fragmentation, translocations and deletions. The BCDX2 complex binds single-stranded DNA, single-stranded gaps in duplex DNA and specifically to nicks in duplex DNA.,PTM:Phosphorylated upon DNA damage, probably by ATM or ATR.,similarity:Belongs to the recA family. RAD51 subfamily.,subunit:Interacts with RAD51D. Part of a BCDX2 complex consisting of RAD51B, RAD51C, RAD51D and XRCC2. Part of a complex consisting of RAD51B, RAD51C, RAD51D, XRCC2 and XRCC3. In the absence of DNA, XRCC2-RAD51D formed a multimeric ring structure. In the presence of single-stranded DNA, XRCC2-RAD51D formed a filamentous structure.,

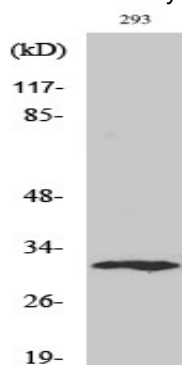
Research Area

Homologous recombination;

Image Data



Immunohistochemistry analysis of paraffin-embedded human lung carcinoma, using XRCC2 Antibody. The picture on the right is blocked with the synthesized peptide.



Western Blot analysis of various cells using XRCC2 Polyclonal Antibody diluted at 1 : 2000. Secondary antibody was diluted

Product Name: XRCC2 Rabbit Polyclonal Antibody
Catalog #: APRab19972



at 1:20000 cells nucleus extracted by Minute TM Cytoplasmic and Nuclear Fractionation kit (SC-003, Invent biotech, MN, USA) .

Note

For research use only.