

**Product Name: WIT1 Rabbit Polyclonal Antibody**  
**Catalog #: APRab19907**



## Summary

<b>Production Name</b>	WIT1 Rabbit Polyclonal Antibody
<b>Description</b>	Rabbit Polyclonal Antibody
<b>Host</b>	Rabbit
<b>Application</b>	IHC,ELISA
<b>Reactivity</b>	Human,Rat,Mouse

## Performance

<b>Conjugation</b>	Unconjugated
<b>Modification</b>	Unmodified
<b>Isotype</b>	IgG
<b>Clonality</b>	Polyclonal
<b>Form</b>	Liquid
<b>Storage</b>	Store at 4°C short term. Aliquot and store at -20°C long term. Avoid freeze/thaw cycles.
<b>Buffer</b>	Liquid in PBS containing 50% glycerol, 0.5% BSA and 0.02% New type preservative N.
<b>Purification</b>	Affinity purification

## Immunogen

<b>Gene Name</b>	WT1-AS WIT1
<b>Alternative Names</b>	Putative Wilms tumor upstream neighbor 1 gene protein (WIT-1;Wilms tumor-associated antisense RNA)
<b>Gene ID</b>	
<b>SwissProt ID</b>	Q06250.Synthesized peptide derived from human WIT1 AA range: 20-100

## Application

<b>Dilution Ratio</b>	IHC 1:100-1:300 ELISA: 1:10000
<b>Molecular Weight</b>	

## Background

This gene is located upstream of the Wilms tumor 1 (WT1) gene; these two genes are bi-directionally transcribed from the

**Product Name: WIT1 Rabbit Polyclonal Antibody**  
**Catalog #: APRab19907**

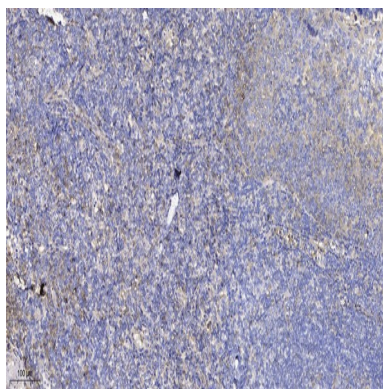
---



same promoter region. This gene is imprinted in kidney, with preferential expression from the paternal allele. Imprinting defects at chromosome 11p13 may contribute to tumorigenesis. [provided by RefSeq, May 2014],cell proliferation,

## Research Area

## Image Data



Immunohistochemical analysis of paraffin-embedded human tonsil. 1, Antibody was diluted at 1:200 (4° overnight) . 2, Tris-EDTA,pH9.0 was used for antigen retrieval. 3,Secondary antibody was diluted at 1:200 (room temperature, 30min) .

## Note

For research use only.